

# Glasgow City Health and Social Care Partnership

## Executive Leadership and Senior Management Team



**Susanne Millar**  
 Chief Officer



**Sharon Wearing**  
 Chief Officer  
 Finance & Resources



**Vacancy**  
 Chief Officer,  
 Strategy and  
 Operations  
 GCHSCP / CSWO



**Dr John O'Dowd**  
 Clinical Director



**Dr Julia Egan**  
 Chief Nurse



**Dr Martin Culshaw**  
 Deputy Medical  
 Director Mental Health  
 & Addiction Services



**Margaret Hogg**  
 Assistant Chief Officer  
 Finance



**Mike Burns**  
 Assistant Chief Officer  
 Children's Services  
 and North East  
 Operations



**Pat Togher**  
 Assistant Chief Officer  
 Public Protection  
 & Complex Needs



**Dr Graeme  
 Marshall**  
 Clinical Director  
 (North East)



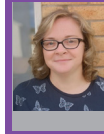
**Gillian Hennon**  
 Head of Finance



**Jackie Kerr**  
 Assistant Chief Officer  
 Adult Services and  
 North West Operations  
 / Interim CSWO



**Frances McMeeking**  
 Assistant Chief Officer  
 Operational Care  
 Services



**Dr Fiona Kinnon**  
 Clinical Director  
 (North West)



**Allison Eccles**  
 Head of  
 Business  
 Development



**Stephen Fitzpatrick**  
 Assistant Chief Officer  
 Older People's  
 Services and  
 South Operations



**Gary Dover**  
 Assistant Chief Officer  
 Primary Care and  
 Early Intervention



**Dr Richard  
 Groden**  
 Clinical Director  
 (South)



**Isla Hyslop**  
 Head of  
 Organisational  
 Development



**Christina  
 Heuston**  
 Assistant Chief Officer  
 Human Resources



**Derek Noble**  
 Head of  
 Human Resources  
 (Social Work)



**Morag Kinnear**  
 Principal HR Officer  
 (NHS)

# Glasgow City Health and Social Care Partnership

## Children's Services



**Mike Burns**  
 Assistant Chief Officer  
 Children's Services and  
 North East Operations




**Karen Dyball**  
 Head of Children's Services  
 (North East)



**Liz Simpson**  
 Head of Children's Services  
 (North West)



**Janet McCullough**  
 Head of Children's Services  
 (South)



**Susan Orr**  
 Head of Children's Services,  
 Families for Children /  
 Children's Residential



**Dr Dominique Harvey**  
 Head of Planning &  
 Strategy (Children's Services  
 & North East Locality)




**Mhairi Cavenagh**  
 Professional Lead Nurse  
 (Children & Families)



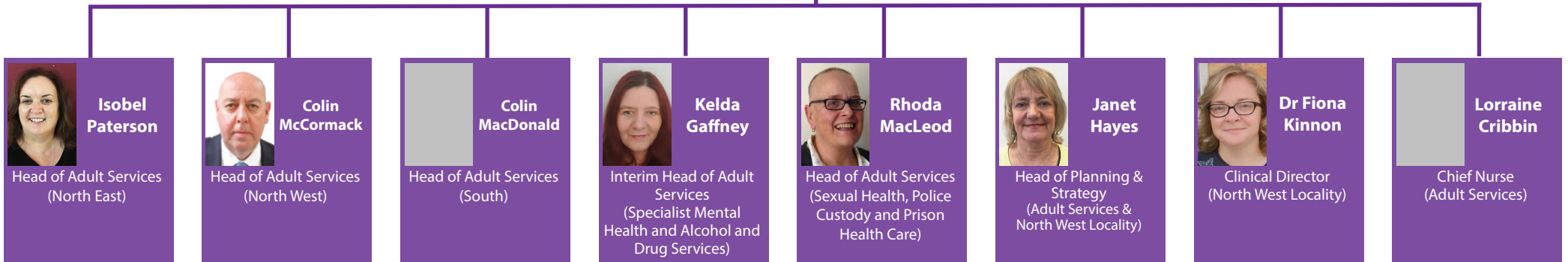

**Dr Graeme Marshall**  
 Clinical Director  
 (North East Locality)

# Glasgow City Health and Social Care Partnership

## Adult Services




**Jackie Kerr**  
 Assistant Chief Officer  
 Adult Services & North West  
 Operations  
 Interim Chief Social Work Officer

**Isobel Paterson**  
 Head of Adult Services  
 (North East)



**Colin McCormack**  
 Head of Adult Services  
 (North West)



**Colin MacDonald**  
 Head of Adult Services  
 (South)




**Kelda Gaffney**  
 Interim Head of Adult  
 Services  
 (Specialist Mental  
 Health and Alcohol and  
 Drug Services)



**Rhoda MacLeod**  
 Head of Adult Services  
 (Sexual Health, Police  
 Custody and Prison  
 Health Care)



**Janet Hayes**  
 Head of Planning &  
 Strategy  
 (Adult Services &  
 North West Locality)



**Dr Fiona Kinnon**  
 Clinical Director  
 (North West Locality)



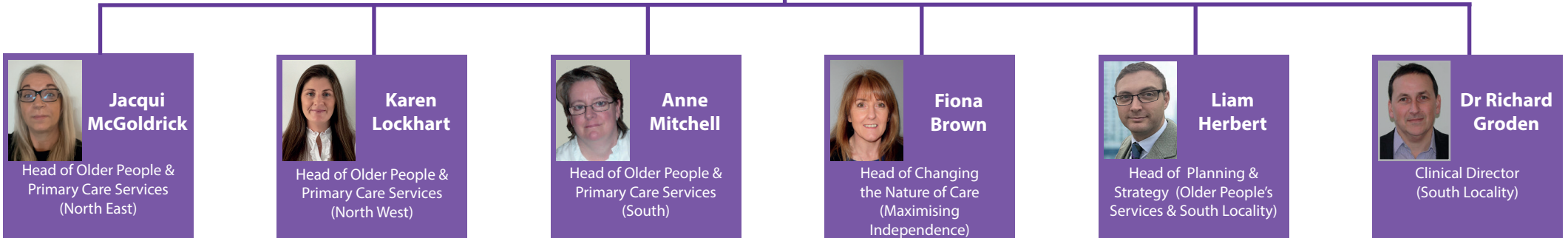
**Lorraine Cribbin**  
 Chief Nurse  
 (Adult Services)

# Glasgow City Health and Social Care Partnership

## Older People's Services



**Stephen Fitzpatrick**  
Assistant Chief Officer  
Older People's Services  
and South Operations

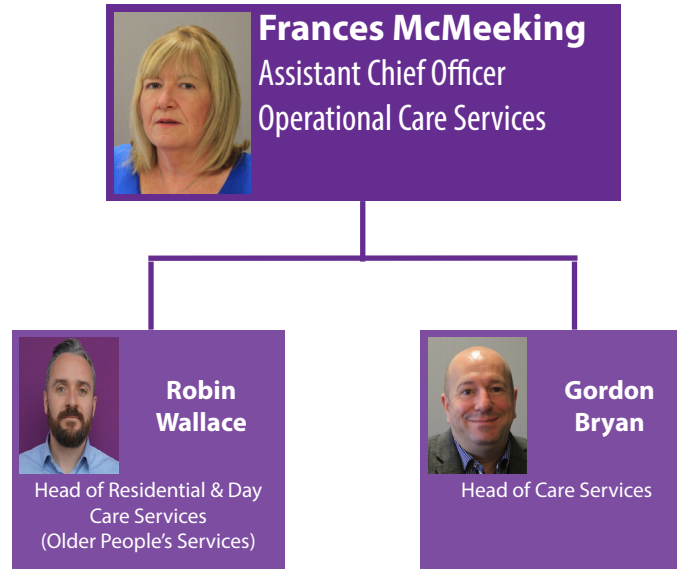


## Glasgow City Health and Social Care Partnership Public Protection & Complex Needs



# Glasgow City Health and Social Care Partnership

## Operational Care Services





## Glasgow City Health and Social Care Partnership

### Primary Care, Early Intervention and Commissioning

