

Glasgow City Health and Social Care Partnership

Executive Leadership and Senior Management Team



Susanne Millar
Chief Officer



Sharon Wearing
Chief Officer
Finance & Resources



Margaret Hogg
Assistant Chief Officer
Finance



Gillian Hennon
Head of Finance



Allison Eccles
Head of
Business
Development



Alix Malcolm
Head of
Organisational
Development



Tracy Keenan
Assistant Chief Officer
Human Resources



Derek Noble
Head of
Human Resources
(Social Work)



Mike Burns
Assistant Chief Officer
Children's Services
and North East
Operations



Jackie Kerr
Assistant Chief Officer
Adult Services and
North West Operations
/ Interim CSWO



Stephen Fitzpatrick
Assistant Chief Officer
Older People's
Services and
South Operations



Vacant
Assistant Chief Officer
Public Protection
& Complex Needs



Frances McMeeking
Assistant Chief Officer
Operational Care
Services



Gary Dover
Assistant Chief Officer
Primary Care and
Early Intervention



Dr John O'Dowd
Clinical Director



Dr Graeme Marshall
Clinical Director
(North East)



Dr Fiona Kinnon
Clinical Director
(North West)



Dr Richard Groden
Clinical Director
(South)



Dr Julia Egan
Chief Nurse



Dr Martin Culshaw
Deputy Medical
Director Mental Health
& Addiction Services

Glasgow City Health and Social Care Partnership

Children's Services




Mike Burns
Assistant Chief Officer
Children's Services and
North East Operations

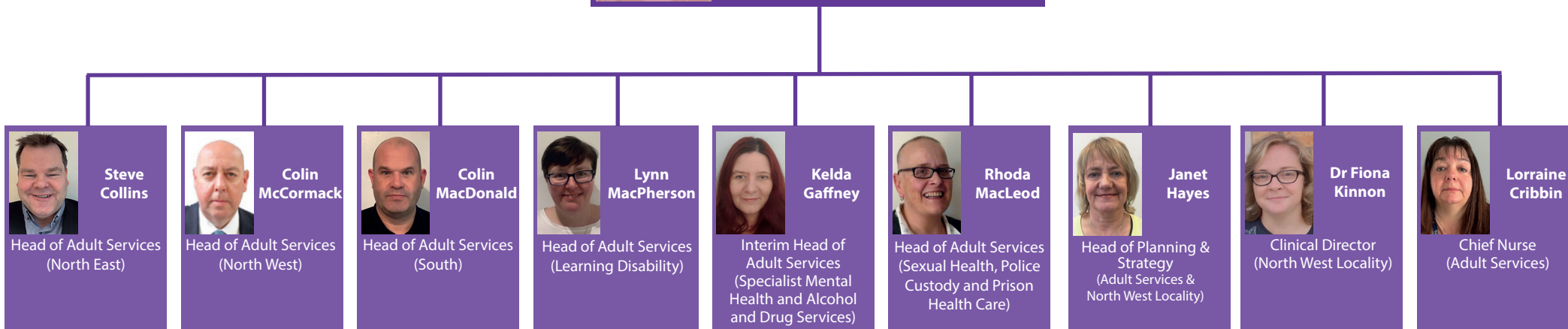


Glasgow City Health and Social Care Partnership

Adult Services



Jackie Kerr
Assistant Chief Officer
Adult Services & North West
Operations
Interim Chief Social Work Officer

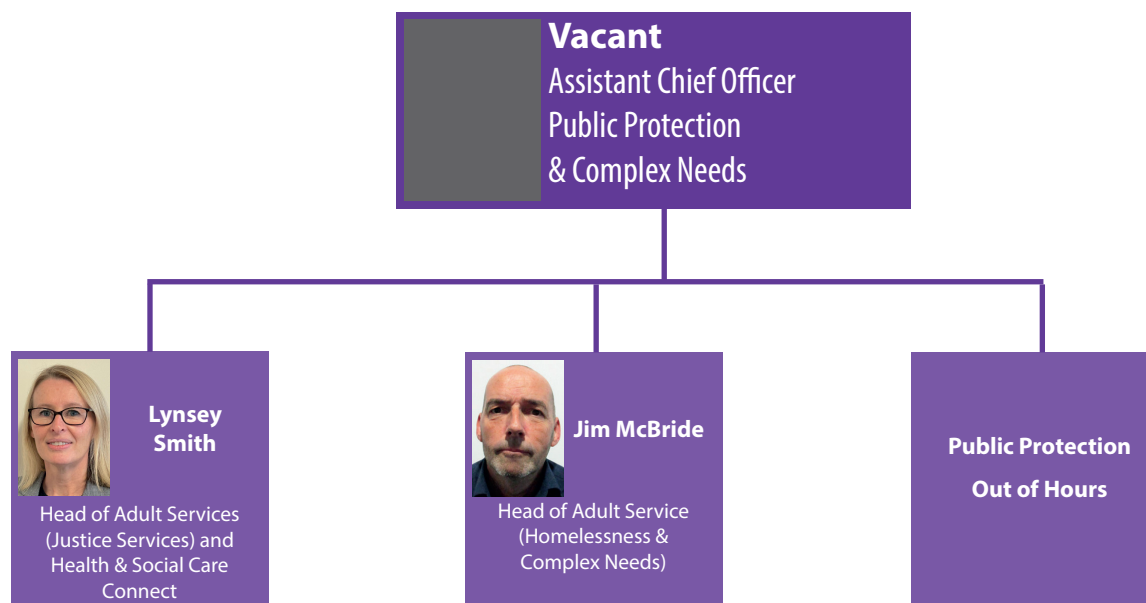


Glasgow City Health and Social Care Partnership Older People's Services



Glasgow City Health and Social Care Partnership

Public Protection & Complex Needs



Glasgow City Health and Social Care Partnership

Operational Care Services



Glasgow City Health and Social Care Partnership

Primary Care, Early Intervention and Commissioning

