

Glasgow City Health and Social Care Partnership

Interim Executive Leadership and Senior Management Team



Jackie Kerr
 Interim Chief Officer



Sharon Wearing
 Chief Officer
 Finance & Resources




Dr John O'Dowd
 Clinical Director



Dr Julia Egan
 Chief Nurse

Dr Una Graham
 Interim Deputy Medical
 Director Mental Health
 & Addiction Services



Margaret Hogg
 Assistant Chief Officer
 Finance



Karen Dyball
 Assistant Chief Officer
 Children's Services
 and North East
 Operations



Karen Lockhart
 Interim Assistant Chief
 Officer
 Adult Services and
 North West Operations




Dr Graeme Marshall
 Clinical Director
 (North East)



Gillian Hennon
 Head of Finance



Kelda Gaffney
 Interim Assistant Chief
 Officer Adult Services
 and Interim Chief
 Social Work Officer



Frances McMeeking
 Assistant Chief
 Officer Operational
 Care Services and
 Homelessness



Dr Fiona Kinnon
 Clinical Director
 (North West)



Craig Cowan
 Head of
 Business
 Development



Stephen Fitzpatrick
 Assistant Chief Officer
 Older People's
 Services and
 South Operations




Gary Dover
 Assistant Chief Officer
 Primary Care and
 Early Intervention



Dr Richard Groden
 Clinical Director
 (South)




Alix Malcolm
 Head of
 Organisational
 Development



Tracy Keenan
 Assistant Chief Officer
 Human Resources



Derek Noble
 Head of
 Human Resources
 (Social Work)



Geraldine Collier
 Principal HR Manager
 (NHS)

Glasgow City Health and Social Care Partnership

Children's Services



Karen Dyball
 Assistant Chief Officer
 Children's Services and
 North East Operations




Peter Orr
 Head of
 Children's Services
 (North East)



Alison Cowper
 Head of
 Children's Services
 (North West)



Janet McCullough
 Head of
 Children's Services
 (South)



Liz Simpson
 Head of Children's
 Services, Families
 for Children
 / Children's
 Residential



Dr Dominique Harvey
 Head of Planning
 & Strategy
 (Children's Services
 & North East
 Locality)



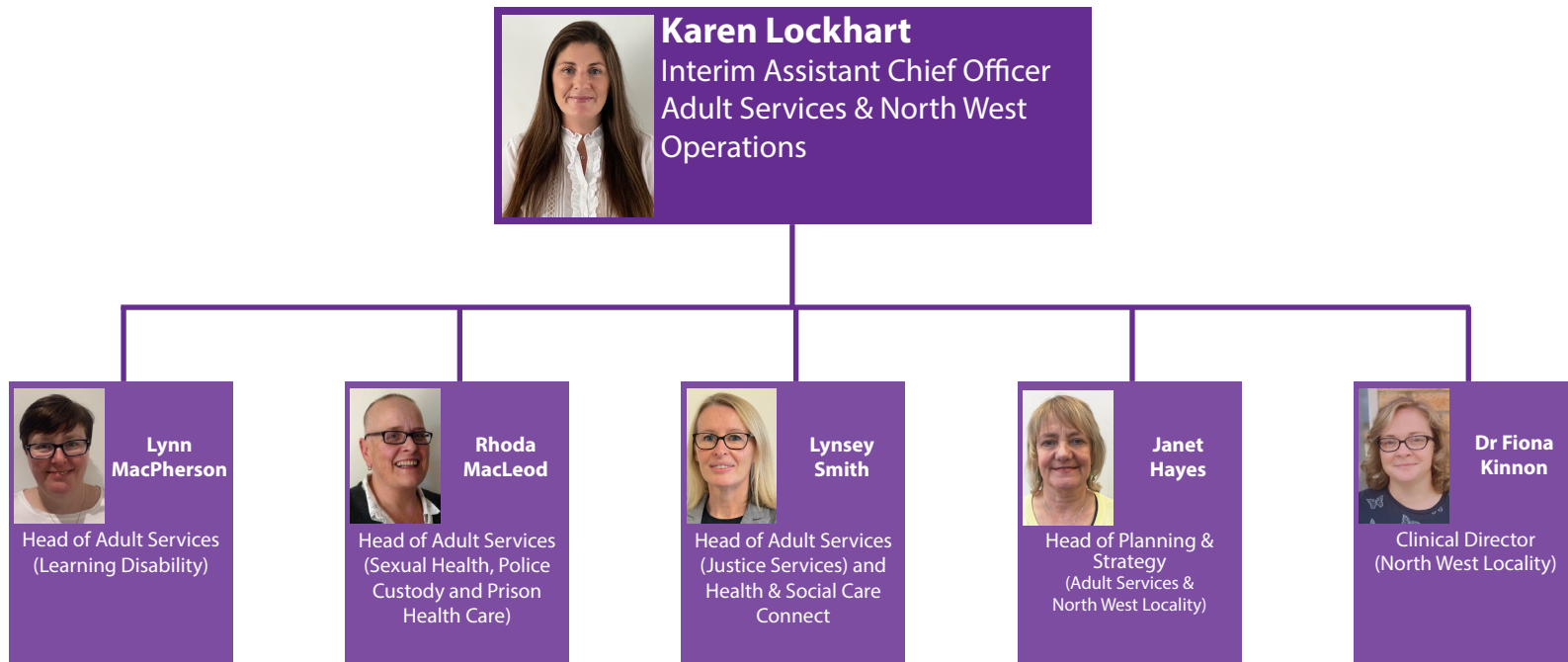
Mhairi Cavanagh
 Professional Lead
 Nurse (Children &
 Families)



Graeme Marshall
 Clinical Director
 (North East
 Locality)


Glasgow City Health and Social Care Partnership

Interim Adult Services

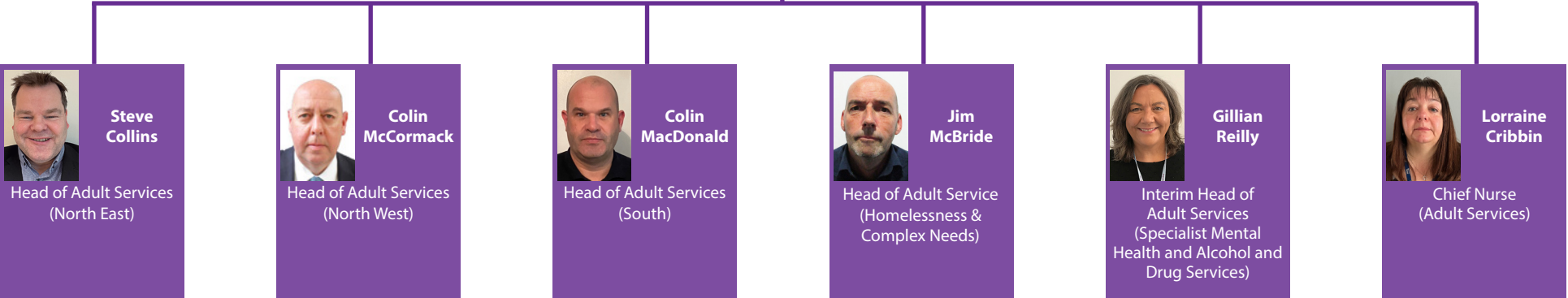


Glasgow City Health and Social Care Partnership

Interim Adult Services



Kelda Gaffney
 Interim Assistant Chief Officer
 Adult Services and Interim Chief
 Social Work Officer




Steve Collins
 Head of Adult Services
 (North East)



Colin McCormack
 Head of Adult Services
 (North West)




Colin MacDonald
 Head of Adult Services
 (South)



Jim McBride
 Head of Adult Service
 (Homelessness &
 Complex Needs)



Gillian Reilly
 Interim Head of
 Adult Services
 (Specialist Mental
 Health and Alcohol and
 Drug Services)



Lorraine Cribbin
 Chief Nurse
 (Adult Services)

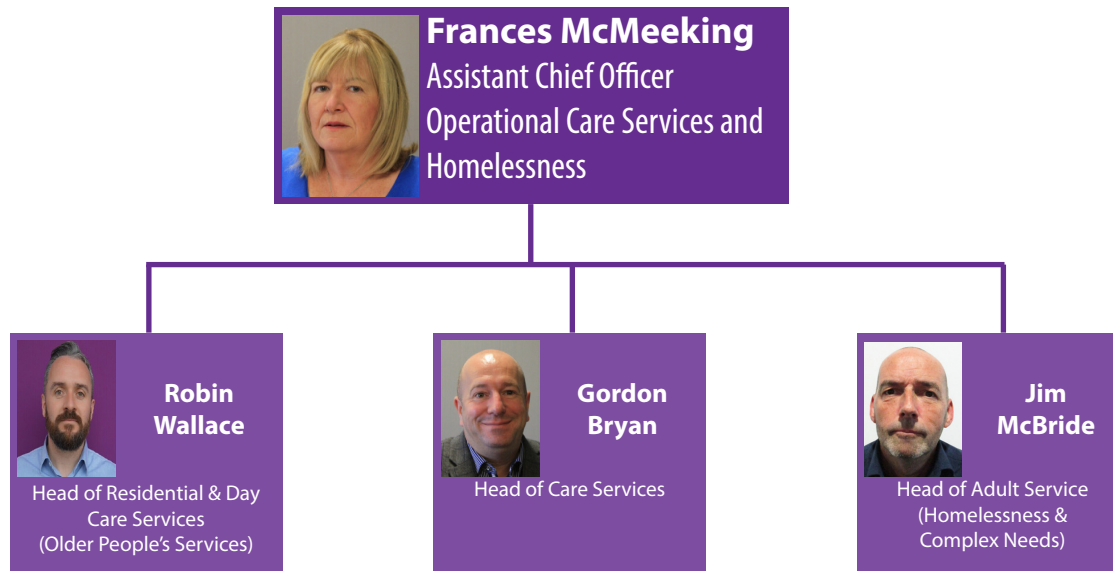
Glasgow City Health and Social Care Partnership

Older People's Services



Glasgow City Health and Social Care Partnership

Operational Care Services and Homelessness





Glasgow City Health and Social Care Partnership

Primary Care, Early Intervention and Commissioning

