

Glasgow City Health and Social Care Partnership

Interim Executive Leadership and Senior Management Team



Jackie Kerr
 Interim Chief Officer



Sharon Wearing
 Chief Officer
 Finance & Resources



Dr John O'Dowd
 Clinical Director



Dr Julia Egan
 Chief Nurse



Dr Martin Culshaw
 Deputy Medical
 Director Mental Health
 & Addiction Services



Margaret Hogg
 Assistant Chief Officer
 Finance



Karen Dyball
 Assistant Chief Officer
 Children's Services
 and North East
 Operations



Karen Lockhart
 Interim Assistant Chief
 Officer
 Adult Services and
 North West Operations




**Dr Graeme
 Marshall**
 Clinical Director
 (North East)



Gillian Hennon
 Head of Finance



Kelda Gaffney
 Interim Assistant Chief
 Officer
 Adult Services



Frances McMeeking
 Assistant Chief Officer
 Operational Care
 Services



Dr Fiona Kinnon
 Clinical Director
 (North West)



Allison Eccles
 Head of
 Business
 Development



Stephen Fitzpatrick
 Assistant Chief Officer
 Older People's
 Services and
 South Operations




Gary Dover
 Assistant Chief Officer
 Primary Care and
 Early Intervention



**Dr Richard
 Groden**
 Clinical Director
 (South)



Alix Malcolm
 Head of
 Organisational
 Development



Tracy Keenan
 Assistant Chief Officer
 Human Resources



Derek Noble
 Head of
 Human Resources
 (Social Work)

Geraldine Collier
 Principal HR Officer
 (NHS)

Glasgow City Health and Social Care Partnership

Children's Services



Karen Dyball
Assistant Chief Officer
Children's Services and
North East Operations



Glasgow City Health and Social Care Partnership

Interim Adult Services



Karen Lockhart
Interim Assistant Chief Officer
Adult Services & North West
Operations



Glasgow City Health and Social Care Partnership

Interim Adult Services



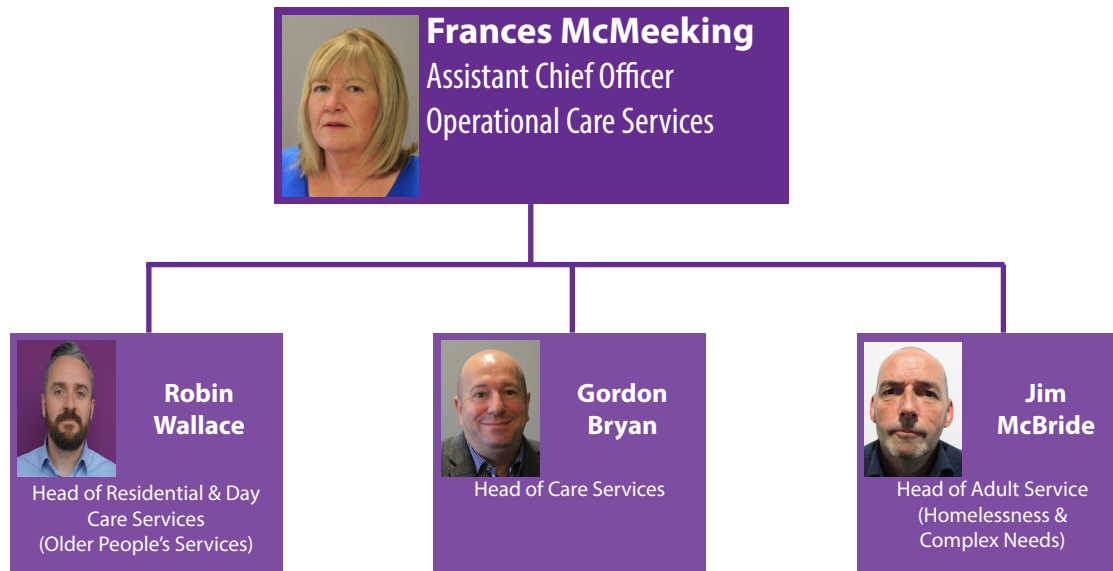
Glasgow City Health and Social Care Partnership

Older People's Services



Glasgow City Health and Social Care Partnership

Operational Care Services





Glasgow City Health and Social Care Partnership

Primary Care, Early Intervention and Commissioning

