

# Glasgow City Health and Social Care Partnership

## Executive Leadership and Senior Management Team



**Jackie Kerr**  
 Interim Chief Officer



**Sharon Wearing**  
 Chief Officer  
 Finance & Resources



**Margaret Hogg**  
 Assistant Chief Officer  
 Finance




**Gillian Hennon**  
 Head of Finance



**Allison Eccles**  
 Head of  
 Business  
 Development




**Alix Malcolm**  
 Head of  
 Organisational  
 Development



**Tracy Keenan**  
 Assistant Chief Officer  
 Human Resources



**Derek Noble**  
 Head of  
 Human Resources  
 (Social Work)



**Karen Dyball**  
 Assistant Chief Officer  
 Children's Services  
 and North East  
 Operations


**Vacant**  
 Assistant Chief Officer  
 Adult Services and  
 North West Operations



**Stephen Fitzpatrick**  
 Assistant Chief Officer  
 Older People's  
 Services and  
 South Operations

**Vacant**  
 Principal HR Officer  
 (NHS)

**Vacant**  
 Assistant Chief Officer  
 Public Protection  
 & Complex Needs



**Frances McMeeking**  
 Assistant Chief Officer  
 Operational Care  
 Services



**Gary Dover**  
 Assistant Chief Officer  
 Primary Care and  
 Early Intervention



**Dr John O'Dowd**  
 Clinical Director



**Dr Graeme Marshall**  
 Clinical Director  
 (North East)



**Dr Fiona Kinnon**  
 Clinical Director  
 (North West)



**Dr Richard Groden**  
 Clinical Director  
 (South)



**Dr Julia Egan**  
 Chief Nurse



**Dr Martin Culshaw**  
 Deputy Medical  
 Director Mental Health  
 & Addiction Services

# Glasgow City Health and Social Care Partnership

## Children's Services



**Karen Dyball**  
 Assistant Chief Officer  
 Children's Services and  
 North East Operations



**Peter Orr**  
 Head of  
 Children's Services  
 (North East)

**Alison Cowper**  
 Head of  
 Children's Services  
 (North West)



**Janet McCullough**  
 Head of  
 Children's Services  
 (South)



**Liz Simpson**  
 Head of Children's  
 Services, Families  
 for Children  
 / Children's  
 Residential



**Dr Dominique Harvey**  
 Head of Planning  
 & Strategy  
 (Children's Services  
 & North East  
 Locality)



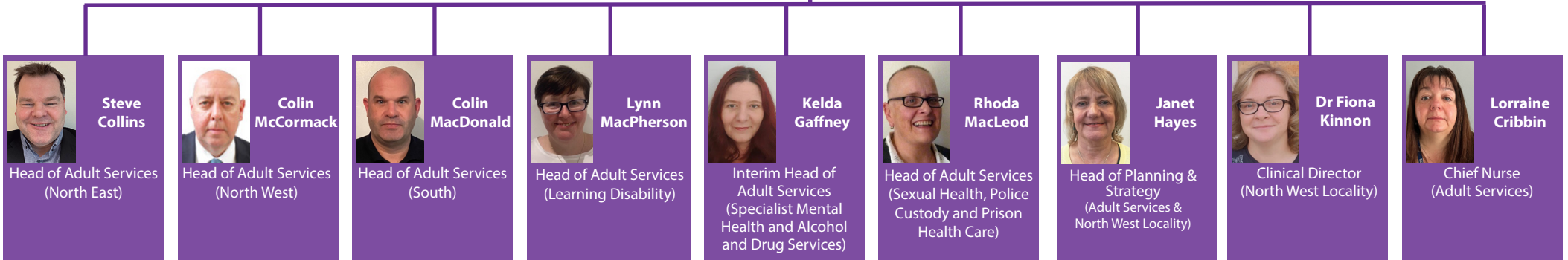
**Mhairi Cavanagh**  
 Professional Lead  
 Nurse (Children &  
 Families)



**Graeme Marshall**  
 Clinical Director  
 (North East  
 Locality)

# Glasgow City Health and Social Care Partnership Adult Services

**Vacant**  
 Assistant Chief Officer  
 Adult Services & North West  
 Operations



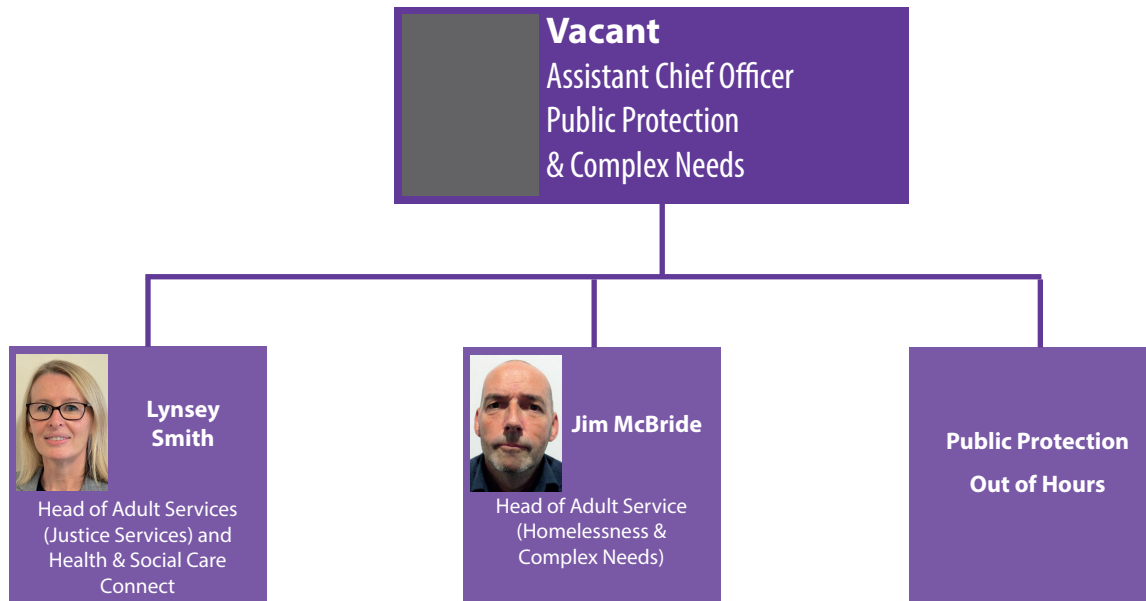
# Glasgow City Health and Social Care Partnership

## Older People's Services



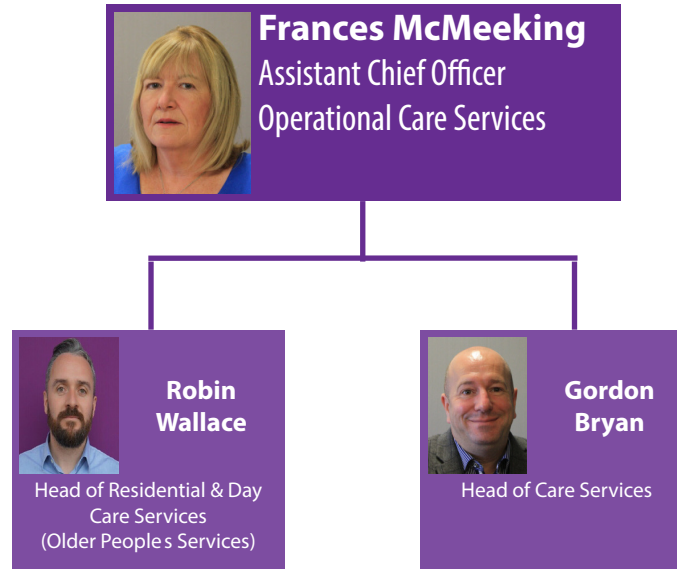
# Glasgow City Health and Social Care Partnership

## Public Protection & Complex Needs



# Glasgow City Health and Social Care Partnership

## Operational Care Services





# Glasgow City Health and Social Care Partnership

## Primary Care, Early Intervention and Commissioning

