

Glasgow City Health and Social Care Partnership

Interim Executive Leadership and Senior Management Team



Jackie Kerr
 Interim Chief Officer




Sharon Wearing
 Chief Officer
 Finance & Resources




Dr John O'Dowd
 Clinical Director



Dr Julia Egan
 Chief Nurse



Dr Una Graham
 Deputy Medical
 Director Mental Health
 & Addiction Services



Margaret Hogg
 Assistant Chief Officer
 Finance



Karen Dyball
 Assistant Chief Officer
 Children's Services
 and North East
 Operations



Karen Lockhart
 Interim Assistant Chief
 Officer
 Adult Services and
 North West Operations




Dr Graeme Marshall
 Clinical Director
 (North East)



Gillian Hennon
 Head of Finance



Kelda Gaffney
 Interim Assistant Chief
 Officer Adult Services
 and Interim Chief
 Social Work Officer



Frances McMeeking
 Assistant Chief
 Officer Operational
 Care Services and
 Homelessness



Dr Fiona Kinnon
 Clinical Director
 (North West)



Craig Cowan
 Head of
 Business
 Development



Stephen Fitzpatrick
 Assistant Chief Officer
 Older People's
 Services and
 South Operations




Gary Dover
 Assistant Chief Officer
 Primary Care and
 Early Intervention



Dr Richard Groden
 Clinical Director
 (South)




Alix Malcolm
 Head of
 Organisational
 Development



Tracy Keenan
 Assistant Chief Officer
 Human Resources



Derek Noble
 Head of
 Human Resources
 (Social Work)



Geraldine Collier
 Principal HR Manager
 (NHS)

Glasgow City Health and Social Care Partnership

Children's Services

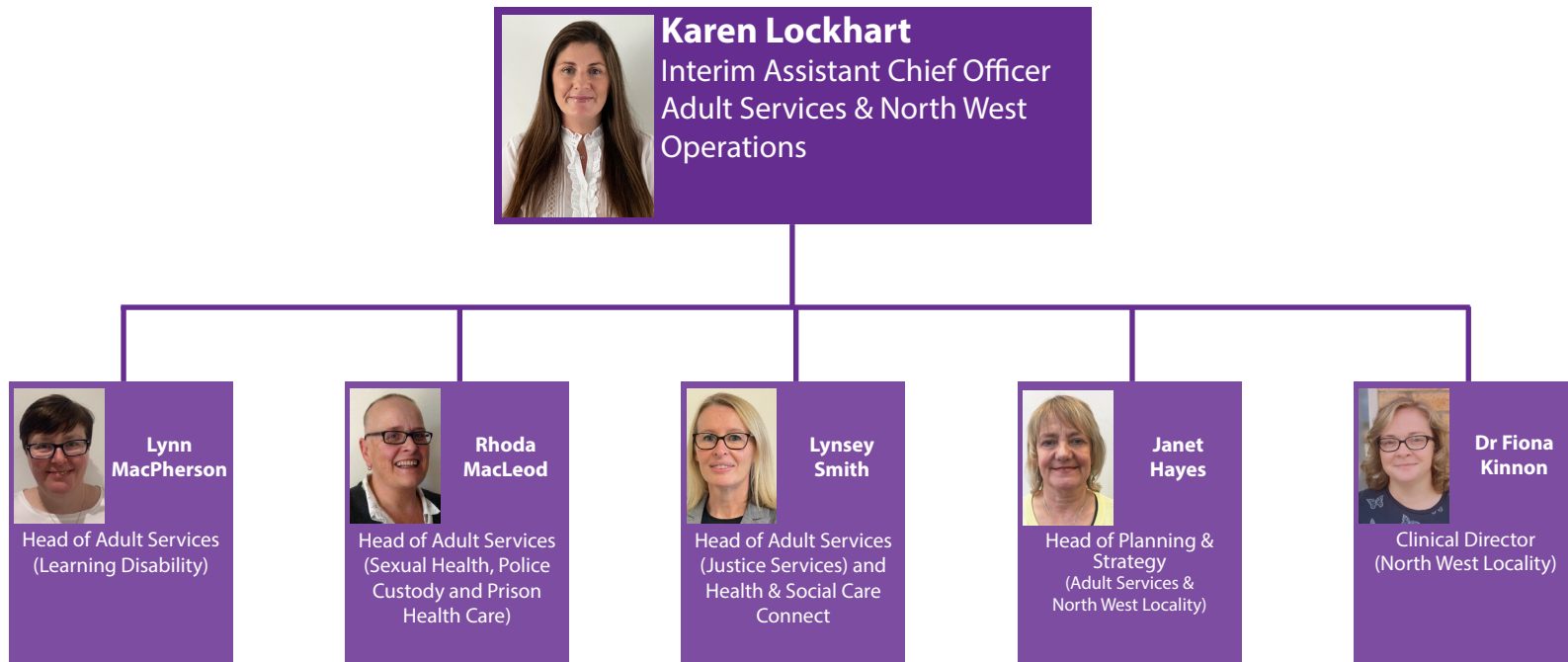


Karen Dyball
Assistant Chief Officer
Children's Services and
North East Operations




Glasgow City Health and Social Care Partnership

Interim Adult Services



Glasgow City Health and Social Care Partnership

Interim Adult Services



Kelda Gaffney
Interim Assistant Chief Officer
Adult Services and Interim Chief
Social Work Officer



Steve Collins
Head of Adult Services
(North East)




Colin McCormack
Head of Adult Services
(North West)




Colin MacDonald
Head of Adult Services
(South)



Jim McBride
Head of Adult Service
(Homelessness &
Complex Needs)



Gillian Reilly
Interim Head of
Adult Services
(Specialist Mental
Health and Alcohol and
Drug Services)



Lorraine Cribbin
Chief Nurse
(Adult Services)

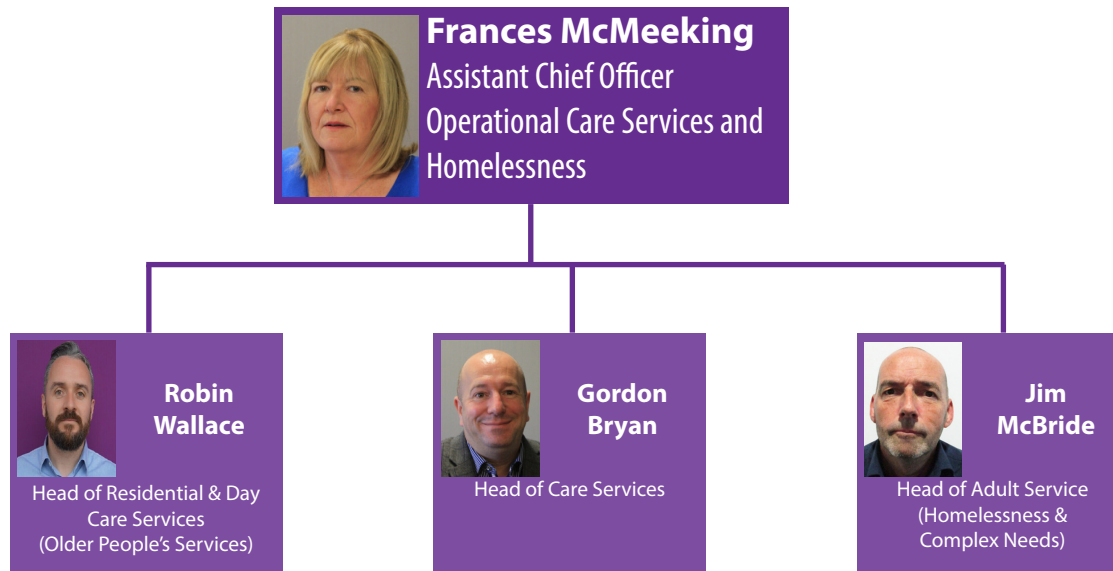
Glasgow City Health and Social Care Partnership

Older People's Services



Glasgow City Health and Social Care Partnership

Operational Care Services and Homelessness





Glasgow City Health and Social Care Partnership

Primary Care, Early Intervention and Commissioning

