

Glasgow City Health and Social Care Partnership


Executive Leadership and Senior Management Team



Pat Togher
 Chief Officer



Sharon Wearing
 Chief Officer
 Finance & Resources



Margaret Hogg
 Assistant Chief Officer
 Finance




Gillian Hennon
 Head of Finance



Craig Cowan
 Head of
 Business
 Development




Alix Malcolm
 Head of
 Organisational
 Development



Tracy Keenan
 Assistant Chief Officer
 Human Resources



Derek Noble
 Head of
 Human Resources
 (Social Work)




Karen Dyball
 Assistant Chief Officer
 Children's Services
 and North East
 Operations



Kelda Gaffney
 Interim Assistant Chief
 Officer Adult Services
 and Interim Chief
 Social Work Officer




Stephen Fitzpatrick
 Assistant Chief Officer
 Older People's
 Services and
 South Operations



Geraldine Collier
 Principal HR Manager
 (NHS)



Karen Lockhart
 Interim Assistant Chief
 Officer
 Adult Services and
 North West Operations



Frances McMeeking
 Assistant Chief
 Officer Operational
 Care Services and
 Homelessness



Gary Dover
 Assistant Chief Officer
 Primary Care and
 Early Intervention



Dr John O'Dowd
 Clinical Director



**Dr Graeme
 Marshall**
 Clinical Director
 (North East)



Dr Fiona Kinnon
 Clinical Director
 (North West)



**Dr Richard
 Groden**
 Clinical Director
 (South)



Lorraine Cribbin
 Interim Chief Nurse



Dr Una Graham
 Deputy Medical
 Director Mental Health
 & Addiction Services

Glasgow City Health and Social Care Partnership

Children's Services



Karen Dyball
 Assistant Chief Officer
 Children's Services and
 North East Operations




Peter Orr
 Head of
 Children's Services
 (North East)



Alison Cowper
 Head of
 Children's Services
 (North West)



Janet McCullough
 Head of
 Children's Services
 (South)



Liz Simpson
 Head of Children's
 Services, Families
 for Children
 / Children's
 Residential



Dr Dominique Harvey
 Head of Planning
 & Strategy
 (Children's Services
 & North East
 Locality)



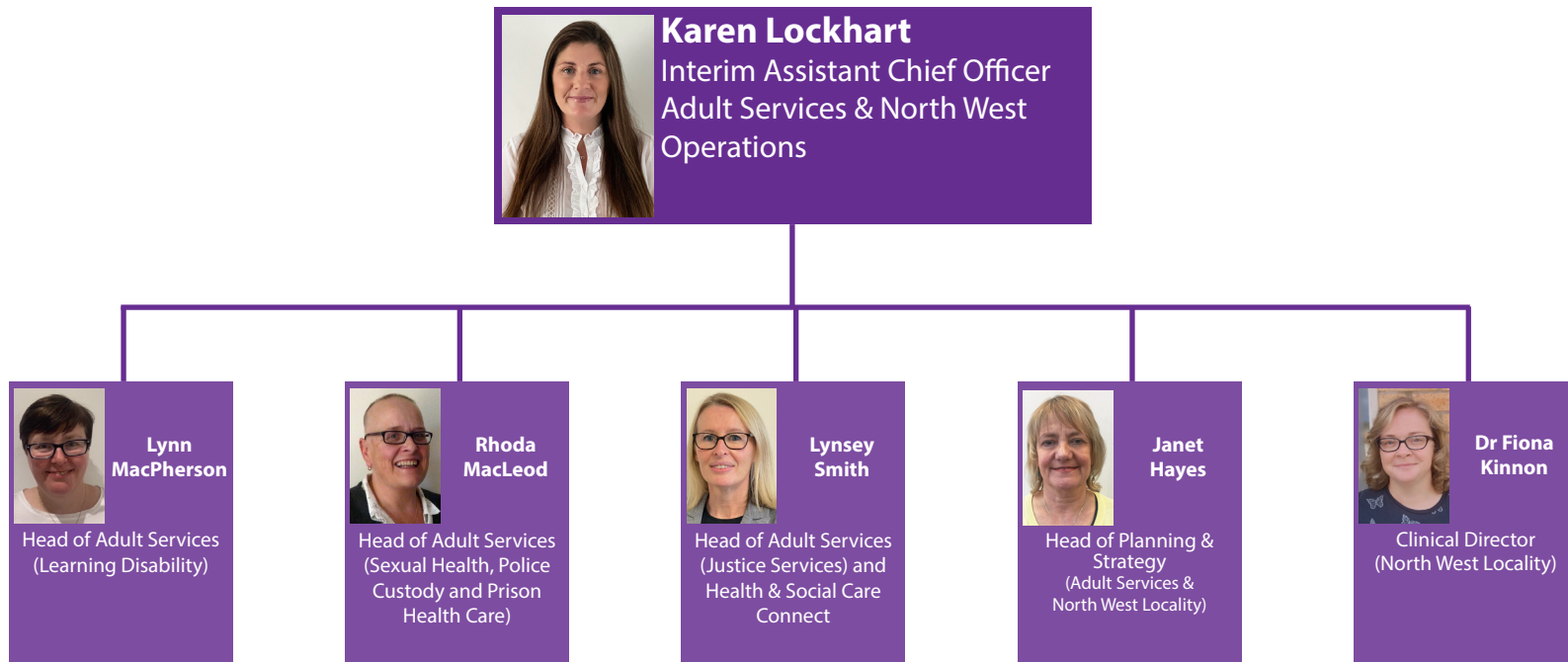
Mhairi Cavanagh
 Professional Lead
 Nurse (Children &
 Families)



Graeme Marshall
 Clinical Director
 (North East
 Locality)


Glasgow City Health and Social Care Partnership

Interim Adult Services




Glasgow City Health and Social Care Partnership


Interim Adult Services



Kelda Gaffney
Interim Assistant Chief Officer
Adult Services and Interim Chief
Social Work Officer



Steve Collins
Head of Adult Services
(North East)



Colin McCormack
Head of Adult Services
(North West)



Colin MacDonald
Head of Adult Services
(South)



Jim McBride
Head of Adult Service
(Homelessness &
Complex Needs)



Gillian Reilly
Interim Head of
Adult Services
(Specialist Mental
Health and Alcohol and
Drug Services)

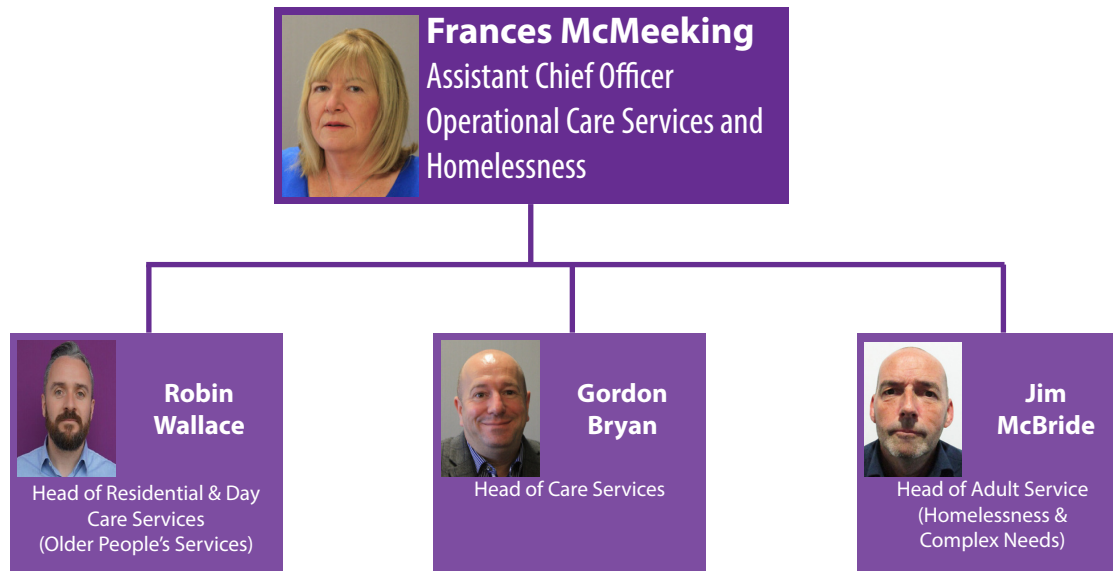
Glasgow City Health and Social Care Partnership

Older People's Services



Glasgow City Health and Social Care Partnership

Operational Care Services and Homelessness





Glasgow City Health and Social Care Partnership Primary Care, Early Intervention and Commissioning

