

Glasgow City Health and Social Care Partnership

Executive Leadership and Senior Management Team



Pat Togher
Chief Officer



Duncan Black
Chief Officer
Finance & Resources



Gillian Hennon
Interim Assistant Chief
Officer Finance



Vacant
Head of Finance



Craig Cowan
Head of
Business
Development



Tracy Keenan
Assistant Chief Officer
Human Resources



Derek Noble
Head of
Human Resources
(Social Work)



Karen Dyball
Assistant Chief Officer
Children's Services
and North East
Operations



Kelda Gaffney
Interim Assistant Chief
Officer Adult Services
and Interim Chief
Social Work Officer



Stephen Fitzpatrick
Assistant Chief Officer
Older People's
Services and
South Operations



Karen Lockhart
Interim Assistant Chief
Officer
Adult Services and
North West Operations



Frances McMeeking
Assistant Chief
Officer Operational
Care Services and
Homelessness



Gary Dover
Assistant Chief Officer
Primary Care and
Early Intervention



Dr John O'Dowd
Clinical Director



**Dr Graeme
Marshall**
Clinical Director
(North East)



Dr Fiona Kinnon
Clinical Director
(North West)



**Dr Richard
Groden**
Clinical Director
(South)



Lorraine Cribbin
Interim Chief Nurse



Dr Una Graham
Deputy Medical
Director Mental Health
& Addiction Services

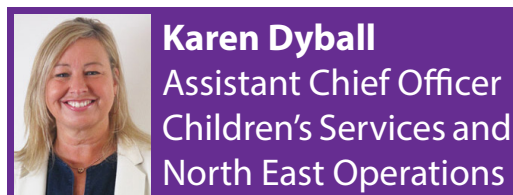


Geraldine Collier
Principal HR Manager
(NHS)



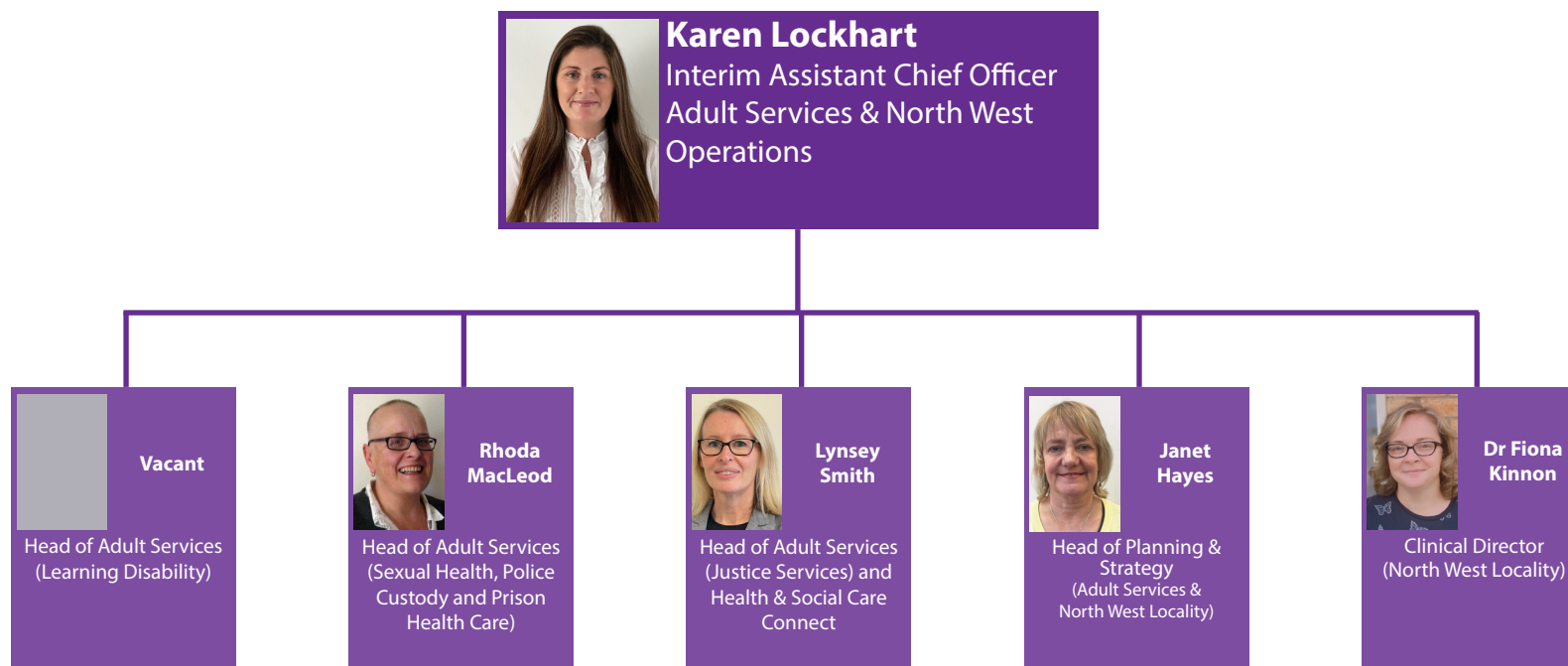
Alix Malcolm
Head of
Organisational
Development

Glasgow City Health and Social Care Partnership Children's Services




Glasgow City Health and Social Care Partnership

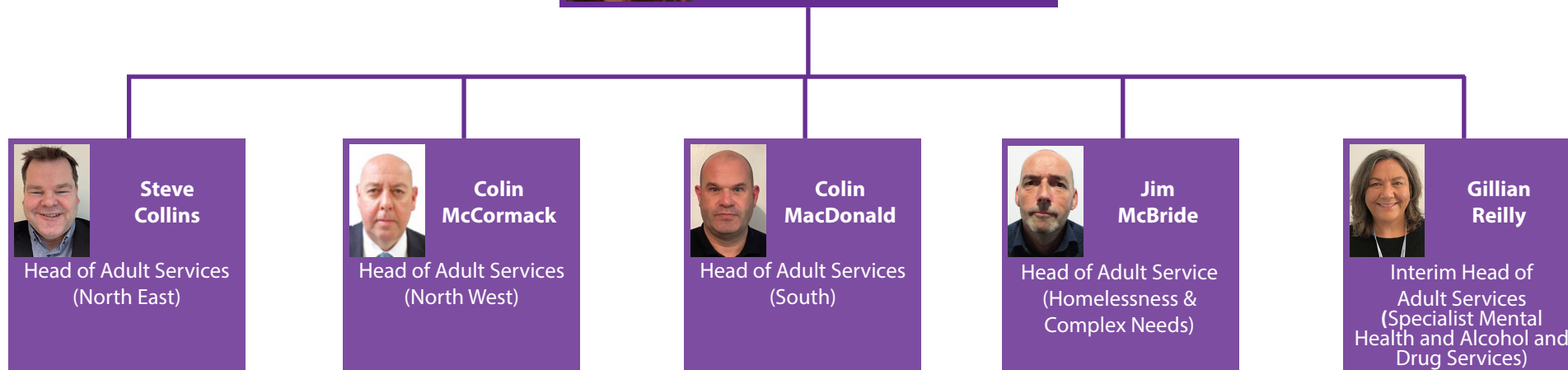
Interim Adult Services



Glasgow City Health and Social Care Partnership Interim Adult Services



Kelda Gaffney
Interim Assistant Chief Officer
Adult Services and Interim Chief
Social Work Officer

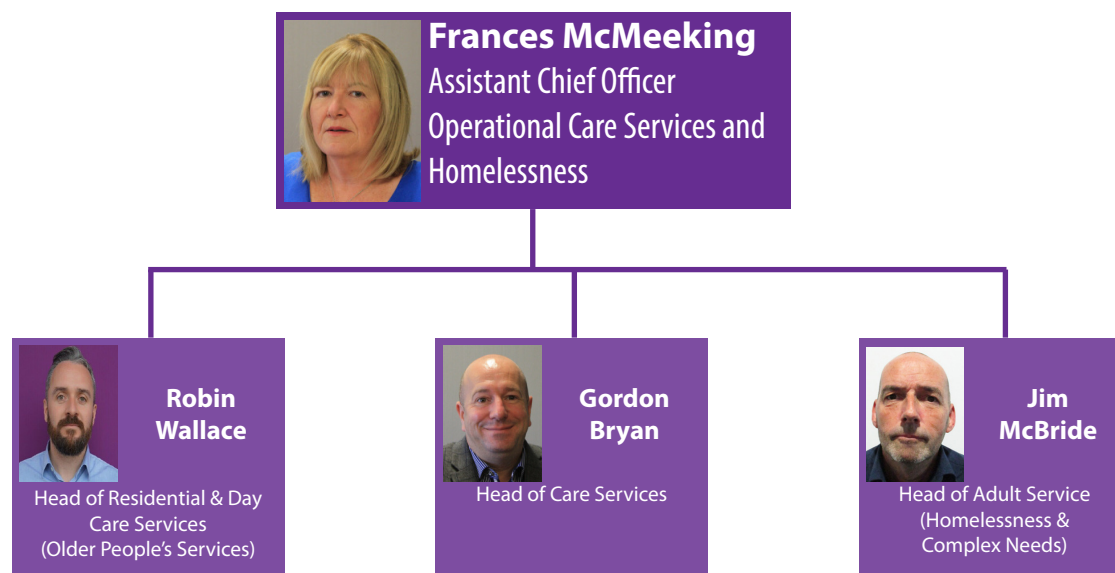


Glasgow City Health and Social Care Partnership Older People's Services



Glasgow City Health and Social Care Partnership

Operational Care Services and Homelessness



Glasgow City Health and Social Care Partnership

Primary Care, Early Intervention and Commissioning

