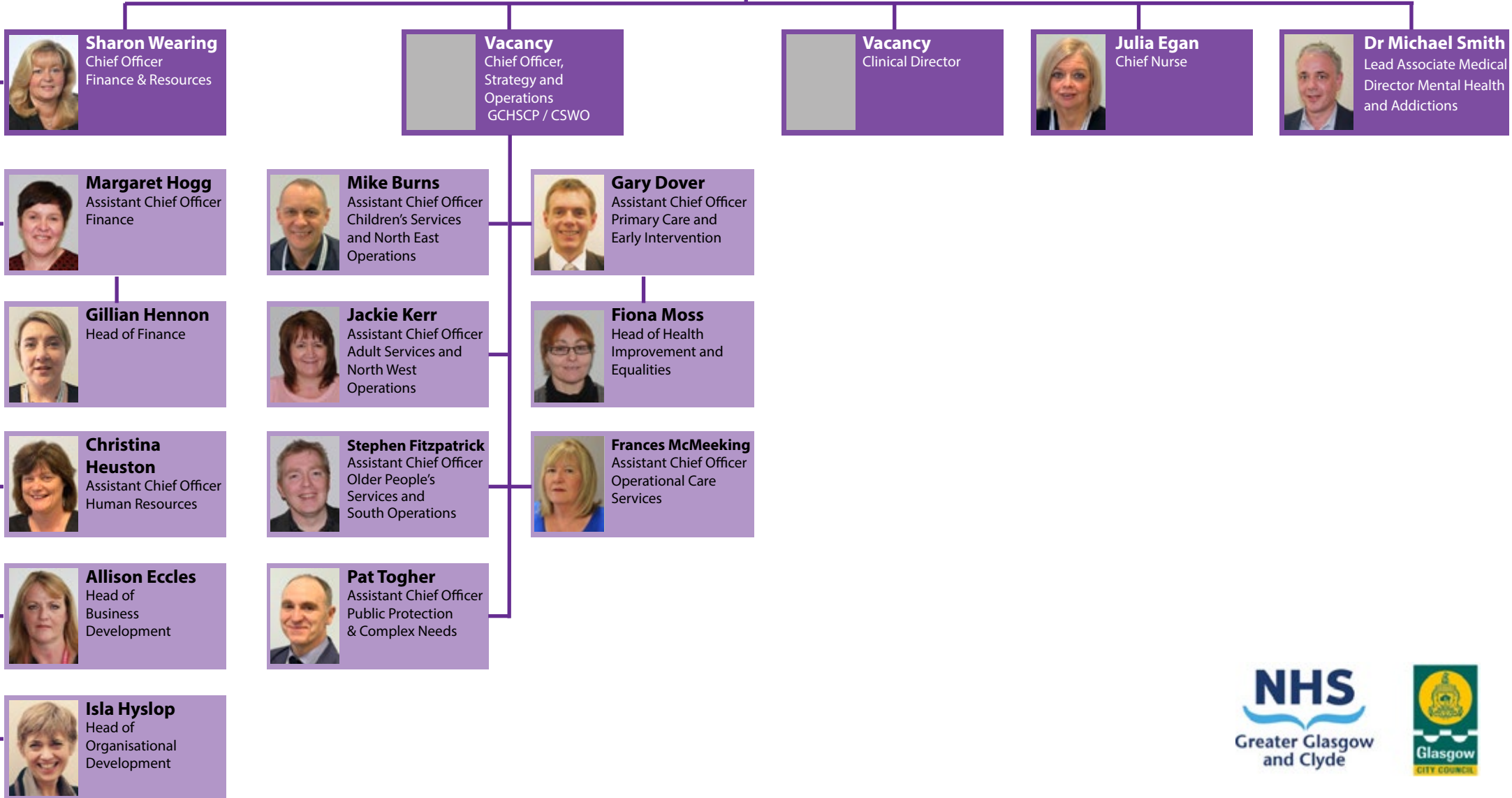


Glasgow City Health and Social Care Partnership

Executive Leadership and Senior Management Team



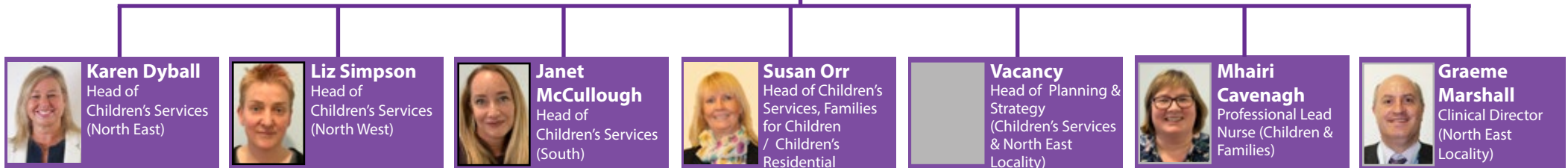
Susanne Millar
 Interim Chief Officer



Glasgow City Health and Social Care Partnership Children's Services



Mike Burns
 Assistant Chief Officer
 Children's Services and
 North East Operations




Karen Dyball
 Head of
 Children's Services
 (North East)




Liz Simpson
 Head of
 Children's Services
 (North West)



Janet McCullough
 Head of
 Children's Services
 (South)



Susan Orr
 Head of Children's
 Services, Families
 for Children
 / Children's
 Residential



Vacancy
 Head of Planning &
 Strategy
 (Children's Services
 & North East
 Locality)



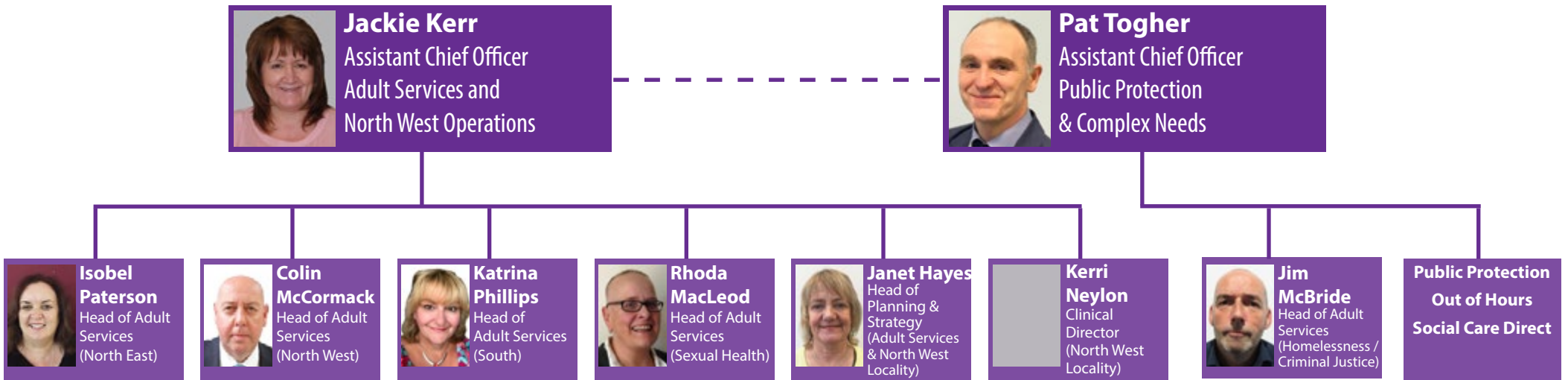
Mhairi Cavenagh
 Professional Lead
 Nurse (Children &
 Families)



Graeme Marshall
 Clinical Director
 (North East
 Locality)

Glasgow City Health and Social Care Partnership

Adult Services



Glasgow City Health and Social Care Partnership

Older People's Services



Glasgow City Health and Social Care Partnership Operational Care Services

