

Glasgow City Health and Social Care Partnership

Executive Leadership and Senior Management Team



Susanne Millar
 Interim Chief Officer



Sharon Wearing
 Chief Officer
 Finance & Resources



Margaret Hogg
 Assistant Chief Officer
 Finance



Gillian Hennon
 Head of Finance



Christina Heuston
 Assistant Chief Officer
 Human Resources



Vacancy
 Head of
 Human Resources



Allison Eccles
 Head of
 Business
 Development



Isla Hyslop
 Head of
 Organisational
 Development



Vacancy
 Chief Officer,
 Strategy and
 Operations
 GCHSCP / CSWO



Mike Burns
 Assistant Chief Officer
 Children's Services
 and North East
 Operations



Jackie Kerr
 Assistant Chief Officer
 Adult Services and
 North West
 Operations



Stephen Fitzpatrick
 Assistant Chief Officer
 Older People's
 Services and
 South Operations



Pat Togher
 Assistant Chief Officer
 Public Protection
 & Complex Needs



Gary Dover
 Assistant Chief Officer
 Primary Care and
 Early Intervention



Fiona Moss
 Head of Health
 Improvement and
 Equalities



Frances McMeeking
 Assistant Chief Officer
 Operational Care
 Services



John O'Dowd
 Clinical Director



Julia Egan
 Chief Nurse



Dr Michael Smith
 Lead Associate Medical
 Director Mental Health
 and Addictions

Glasgow City Health and Social Care Partnership

Children's Services

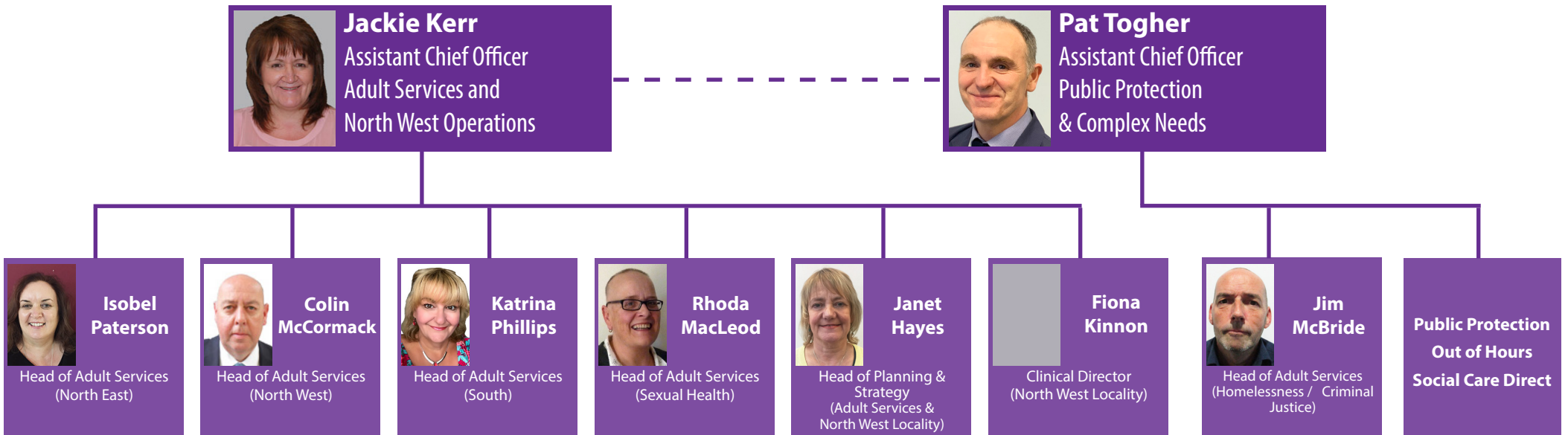


Mike Burns
Assistant Chief Officer
Children's Services and
North East Operations




Glasgow City Health and Social Care Partnership

Adult Services




Glasgow City Health and Social Care Partnership

Older People's Services



Stephen Fitzpatrick
Assistant Chief Officer
Older People's Services
and South Operations



Fiona Brown
Head of Older People's
Services (North East)



Paul Adams
Head of Older People's
Services (North West)



Anne Mitchell
Head of Older People's
Services (South)



Hamish Battye
Head of Planning &
Strategy (Older People's
Services & South Locality)



Richard Groden
Clinical Director
(South Locality)

Glasgow City Health and Social Care Partnership

Operational Care Services

