

Glasgow City Health and Social Care Partnership

Executive Leadership and Senior Management Team



Susanne Millar
 Chief Officer



Sharon Wearing
 Chief Officer
 Finance & Resources

Vacancy
 Chief Officer,
 Strategy and
 Operations
 GCHSCP / CSWO




John O'Dowd
 Clinical Director



Julia Egan
 Chief Nurse

Vacancy
 Lead Associate Medical
 Director Mental Health
 and Addictions



Margaret Hogg
 Assistant Chief Officer
 Finance



Mike Burns
 Assistant Chief Officer
 Children's Services
 and North East
 Operations



Gary Dover
 Assistant Chief Officer
 Primary Care and
 Early Intervention



Graeme Marshall
 Clinical Director
 (North East)



Gillian Hennon
 Head of Finance



Jackie Kerr
 Assistant Chief Officer
 Adult Services and
 North West Operations
 / Interim CSWO



Fiona Moss
 Head of Health
 Improvement and
 Equalities




Dr Fiona Kinnon
 Clinical Director
 (North West)



Christina Heuston
 Assistant Chief Officer
 Human Resources



Stephen Fitzpatrick
 Assistant Chief Officer
 Older People's
 Services and
 South Operations



Frances McMeeking
 Assistant Chief Officer
 Operational Care
 Services



Richard Groden
 Clinical Director
 (South)

Vacancy
 Head of
 Human Resources



Pat Togher
 Assistant Chief Officer
 Public Protection
 & Complex Needs



Allison Eccles
 Head of
 Business
 Development



Isla Hyslop
 Head of
 Organisational
 Development

Glasgow City Health and Social Care Partnership

Children's Services




Mike Burns
Assistant Chief Officer
Children's Services and
North East Operations

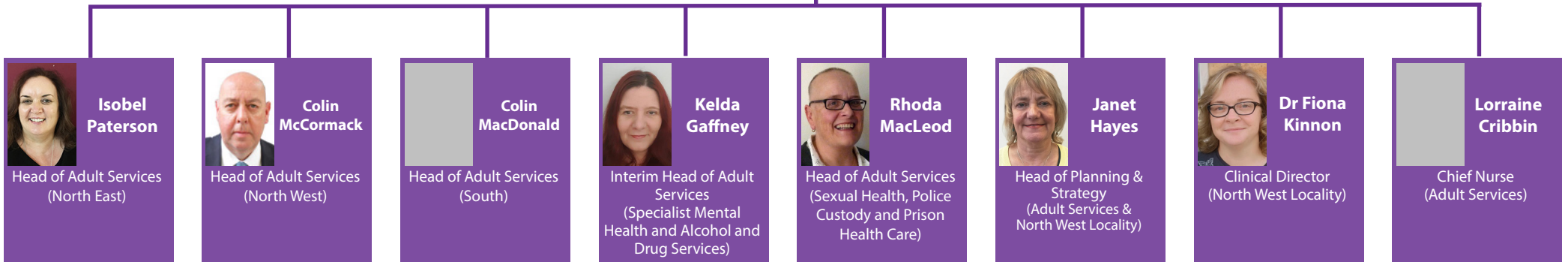



Glasgow City Health and Social Care Partnership

Adult Services




Jackie Kerr
 Assistant Chief Officer
 Adult Services & North West
 Operations
 Interim Chief Social Work Officer

Isobel Paterson
 Head of Adult Services
 (North East)



Colin McCormack
 Head of Adult Services
 (North West)



Colin MacDonald
 Head of Adult Services
 (South)




Kelda Gaffney
 Interim Head of Adult
 Services
 (Specialist Mental
 Health and Alcohol and
 Drug Services)



Rhoda MacLeod
 Head of Adult Services
 (Sexual Health, Police
 Custody and Prison
 Health Care)



Janet Hayes
 Head of Planning &
 Strategy
 (Adult Services &
 North West Locality)



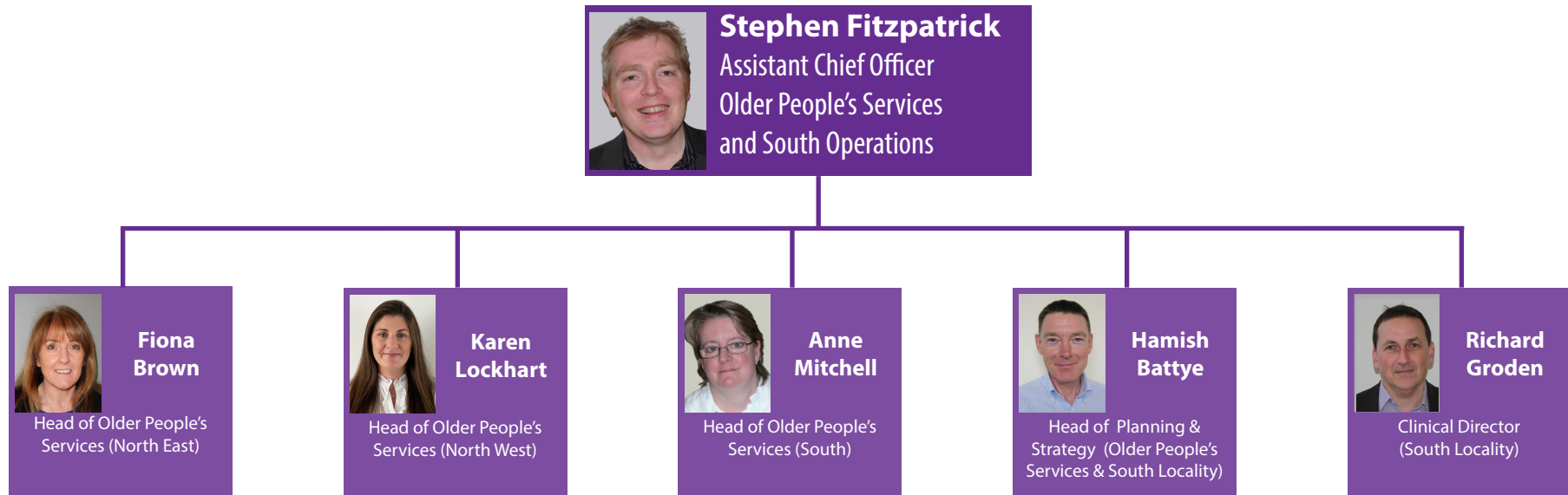
Dr Fiona Kinnon
 Clinical Director
 (North West Locality)



Lorraine Cribbin
 Chief Nurse
 (Adult Services)

Glasgow City Health and Social Care Partnership

Older People's Services





Glasgow City Health and Social Care Partnership

Public Protection & Complex Needs



Glasgow City Health and Social Care Partnership

Operational Care Services

