

# Glasgow City Health and Social Care Partnership

## Executive Leadership and Senior Management Team



**Susanne Millar**  
 Interim Chief Officer



**Sharon Wearing**  
 Chief Officer  
 Finance & Resources



**Margaret Hogg**  
 Assistant Chief Officer  
 Finance



**Gillian Hennon**  
 Head of Finance



**Christina Heuston**  
 Assistant Chief Officer  
 Human Resources



**Vacancy**  
 Head of  
 Human Resources



**Allison Eccles**  
 Head of  
 Business  
 Development



**Isla Hyslop**  
 Head of  
 Organisational  
 Development



**Vacancy**  
 Chief Officer,  
 Strategy and  
 Operations  
 GCHSCP / CSWO



**Mike Burns**  
 Assistant Chief Officer  
 Children's Services  
 and North East  
 Operations



**Jackie Kerr**  
 Assistant Chief Officer  
 Adult Services and  
 North West  
 Operations



**Stephen Fitzpatrick**  
 Assistant Chief Officer  
 Older People's  
 Services and  
 South Operations



**Pat Togher**  
 Assistant Chief Officer  
 Public Protection  
 & Complex Needs



**Gary Dover**  
 Assistant Chief Officer  
 Primary Care and  
 Early Intervention



**Fiona Moss**  
 Head of Health  
 Improvement and  
 Equalities



**Frances McMeeking**  
 Assistant Chief Officer  
 Operational Care  
 Services



**Vacancy**  
 Clinical Director



**Julia Egan**  
 Chief Nurse



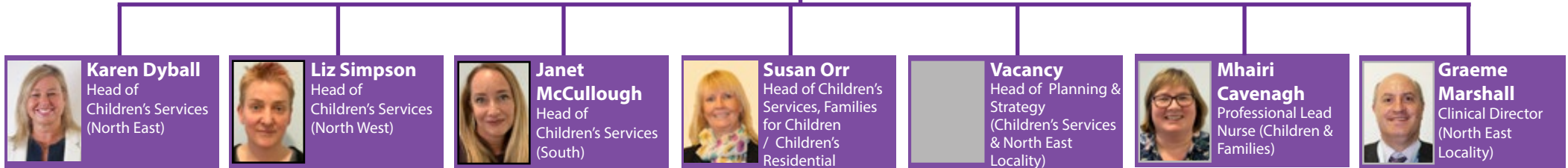
**Dr Michael Smith**  
 Lead Associate Medical  
 Director Mental Health  
 and Addictions

# Glasgow City Health and Social Care Partnership

## Children's Services

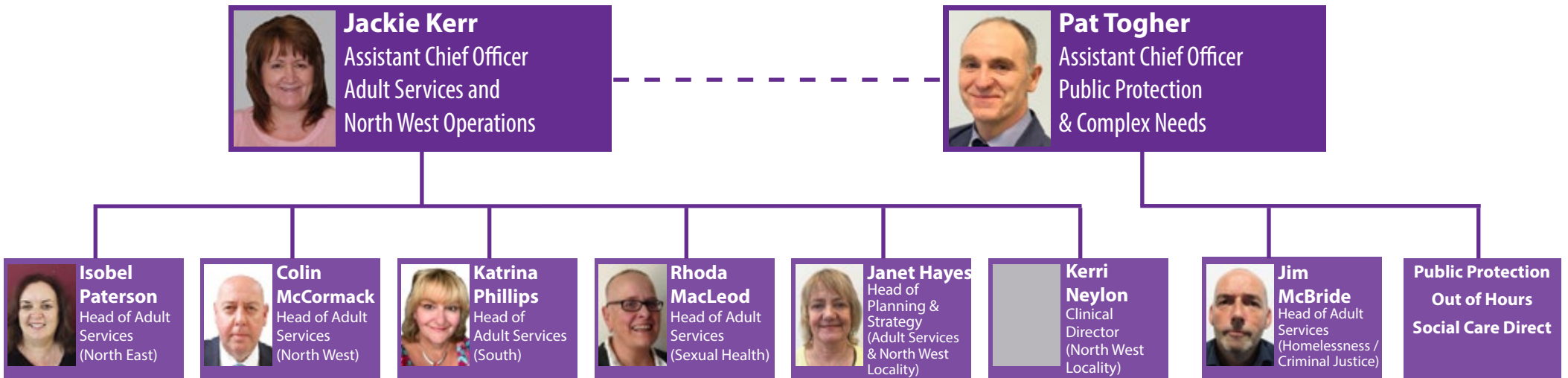


**Mike Burns**  
Assistant Chief Officer  
Children's Services and  
North East Operations



# Glasgow City Health and Social Care Partnership

## Adult Services



# Glasgow City Health and Social Care Partnership

## Older People's Services



## Glasgow City Health and Social Care Partnership Operational Care Services

