

North East Health and Social Care Hub Engagement Session

Thursday 27 March 2021

10 – 11:30am

Session Plan

- **Welcome and introductions**
Dominique Harvey, Head of Planning for Children's Services and North-East Locality
- **Design and layout of North East Hub**
Gordon Gibb, Hoskins Architects
- **Community benefits**
Gary Smithson, Hub West Scotland
- **Question and answer session**



Introduction - Hub Highlights

- **Vision for the Hub**

Integrated health, social care and community hub model

- **Improving health and wellbeing**

Collocated services and more seamless access to supports

- **Investment and regeneration**

Citywide services and facilities – increased footfall

- **Adaptation and flexibility**

Learning from the pandemic



Project Partners



Sub Group Reporting Structure

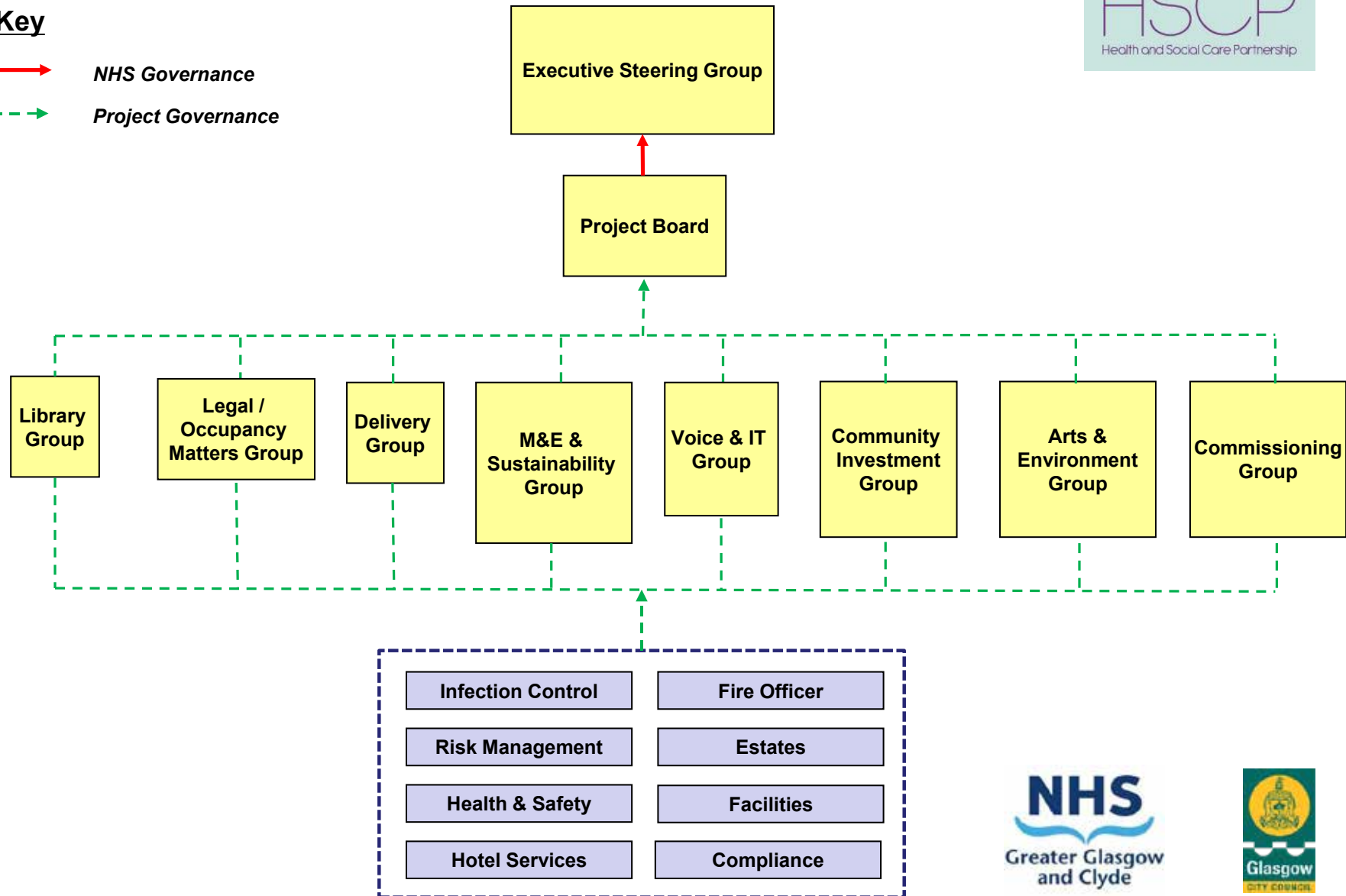
Key



NHS Governance



Project Governance



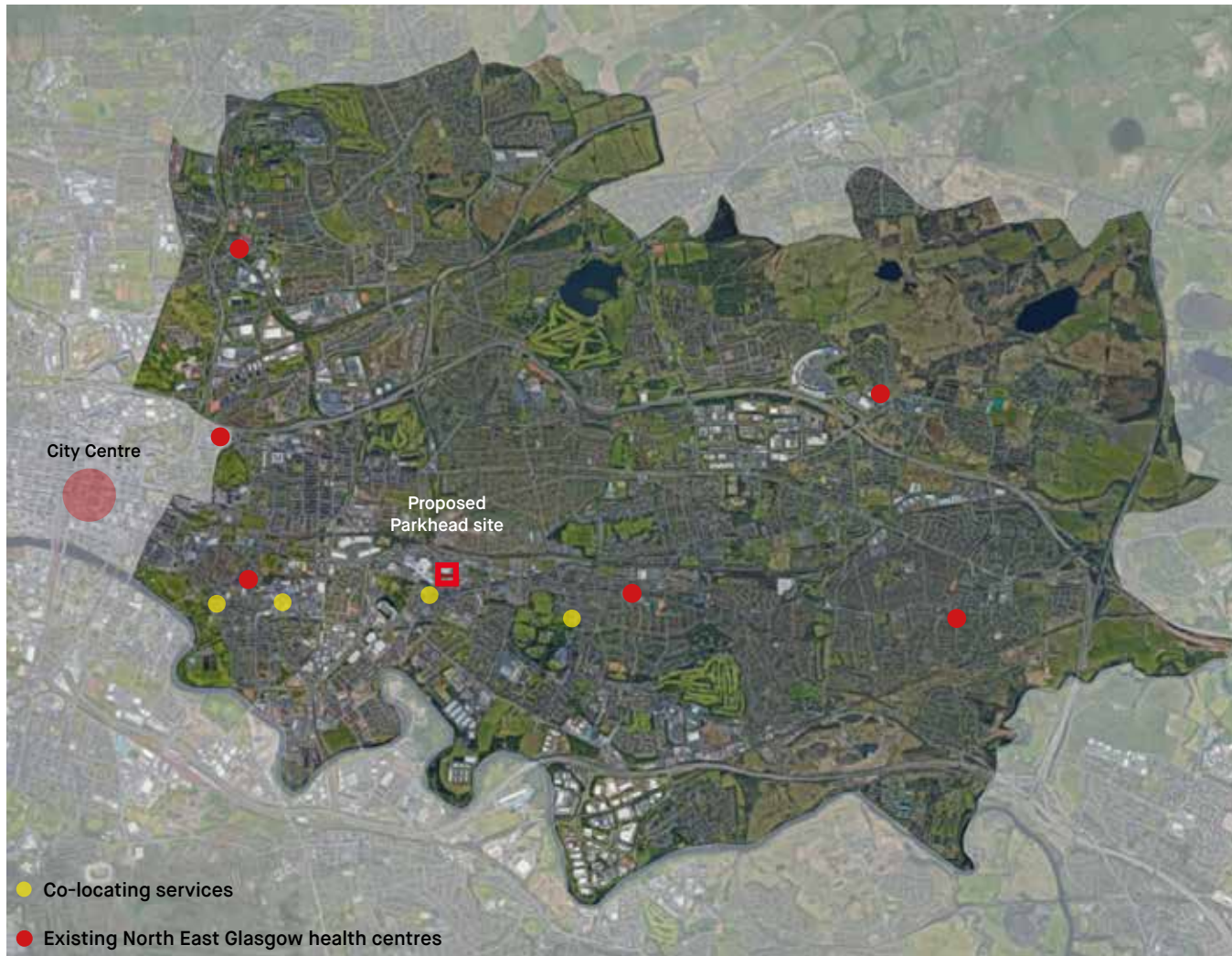
Design and Layout of North East Hub

Gordon Gibb,
Hoskins Architects



Introduction

1. Aerial map of North East Glasgow NHS area.



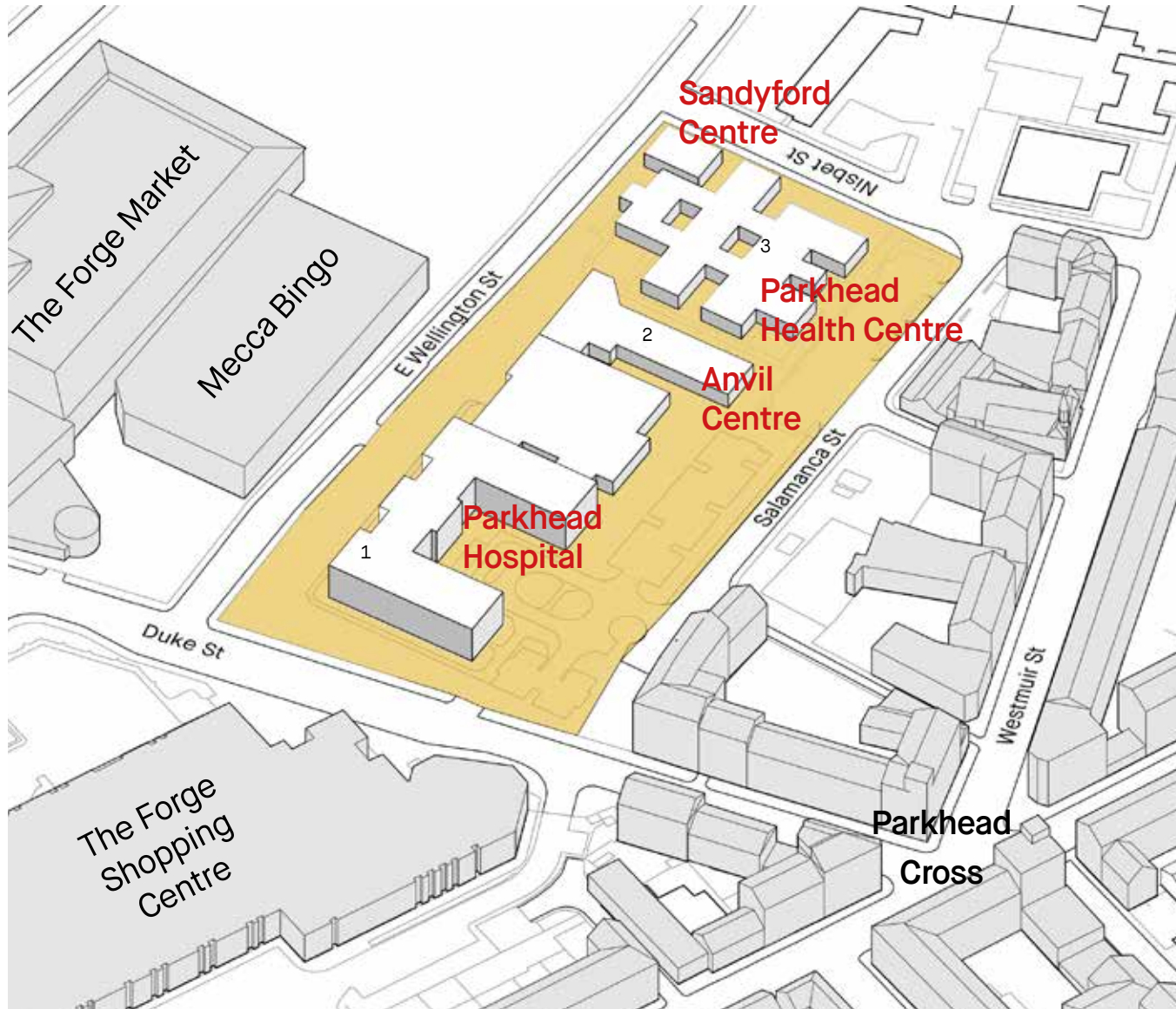
- Bringing together a wide range of community, health and social care services all under one roof.
- A community building that is open and welcoming
- Creating a caring environment
- Movement between services to be clear, simple and intuitive
- Better integration health and social care disciplines
- A building that creates a sense of civic pride and to be a landmark for the local area
- A flexible, adaptable building that is capable of future expansion
- A design that offers a safe, secure space for all building users
- Training spaces for social care staff from across the city

Location



- Located in the heart of the East end, just north of Parkhead Cross
- Site currently occupied by the, now closed, Parkhead Hospital, the Anvil Resource Centre, Sandyford Clinic and the existing Parkhead Health Centre.
- On the edge of Parkhead Conversation Area
- Bounded by Duke St. East Wellington St. Nisbet St. and Salamanca St.
- Opposite The Forge Retail Centre
- Predominantly retail uses at ground floor

Proposed Site

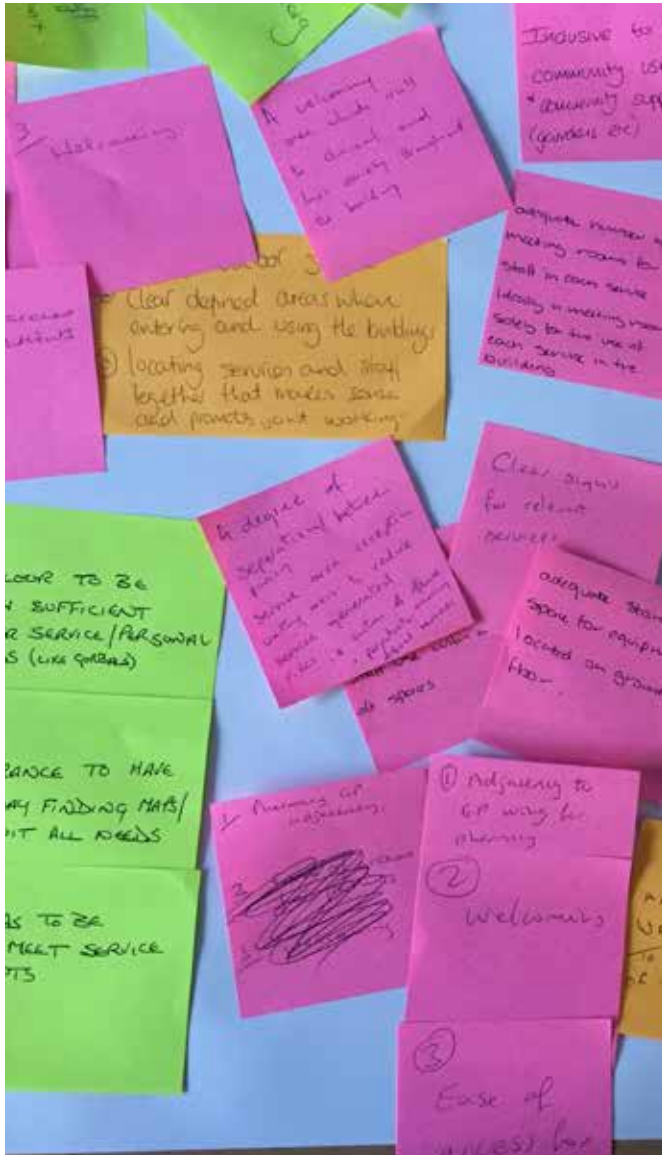


1. Parkhead Hospital
2. Anvil Resource Centre
3. Parkhead Health Centre

Consultation

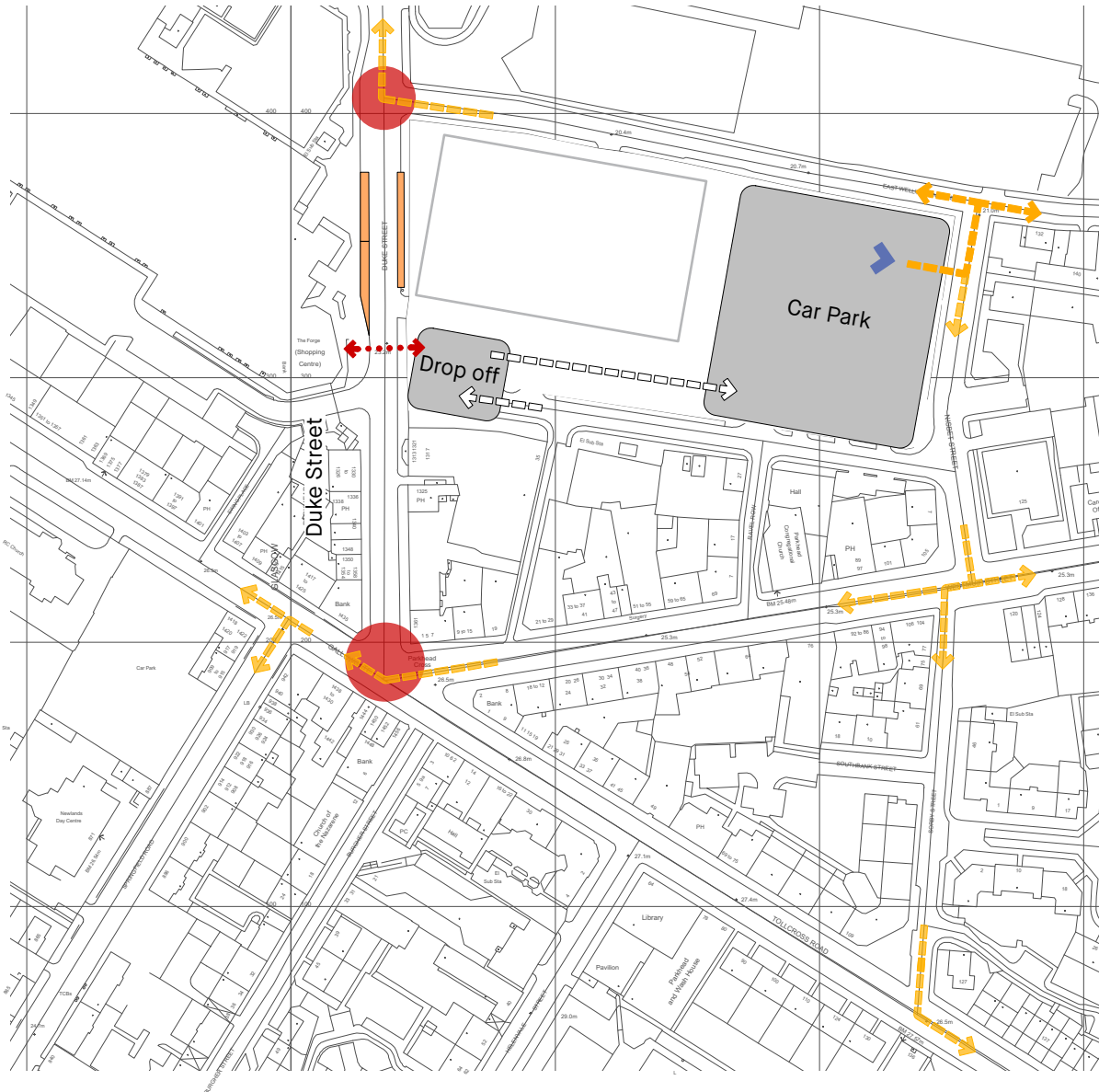
Project stakeholder groups consisting of representatives from:

- Local community groups
- GP practices
- Pharmacists
- Community Dental
- Adult Services (including PCMH, OAMH & Addictions)
- Criminal Justice
- Children's Services (CAMHS, SCPT and Social Work)
- Sandyford Services
- District Nursing
- Physiotherapy & Podiatry
- Health Improvement Team
- Glasgow Life
- Glasgow HSCP
- NHSGGC Facilities Management
- NHS GCC
- NHS Equality Team



Consultation

Traffic/parking/drop-off strategy



Pre-Planning Application discussion has taken place with representatives from:

- Community Councils
- GCC Planning Department
- GCC Roads Department
- GCC Urban Design
- GCC Building Control
- Police Scotland
- Architecture & Design Scotland
- Health Facilities Scotland
- SEPA
- Scottish Power Networks
- Scottish Water
- GCC Flood Risk Management
- Ecology Surveyors

Consultation



“General uplifting feeling”

“Feeling cared for”

“Make something more of visit rather than just visiting GP”

“Thanks for taking on board previous public comments”

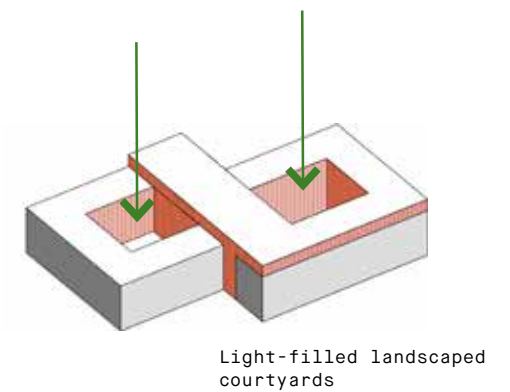
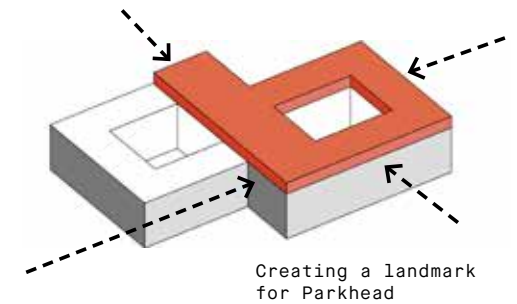
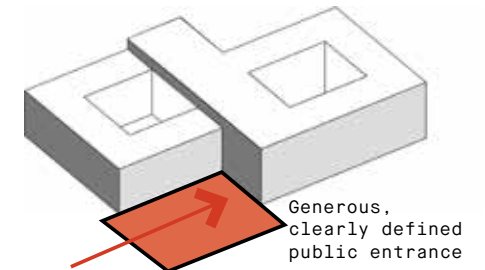
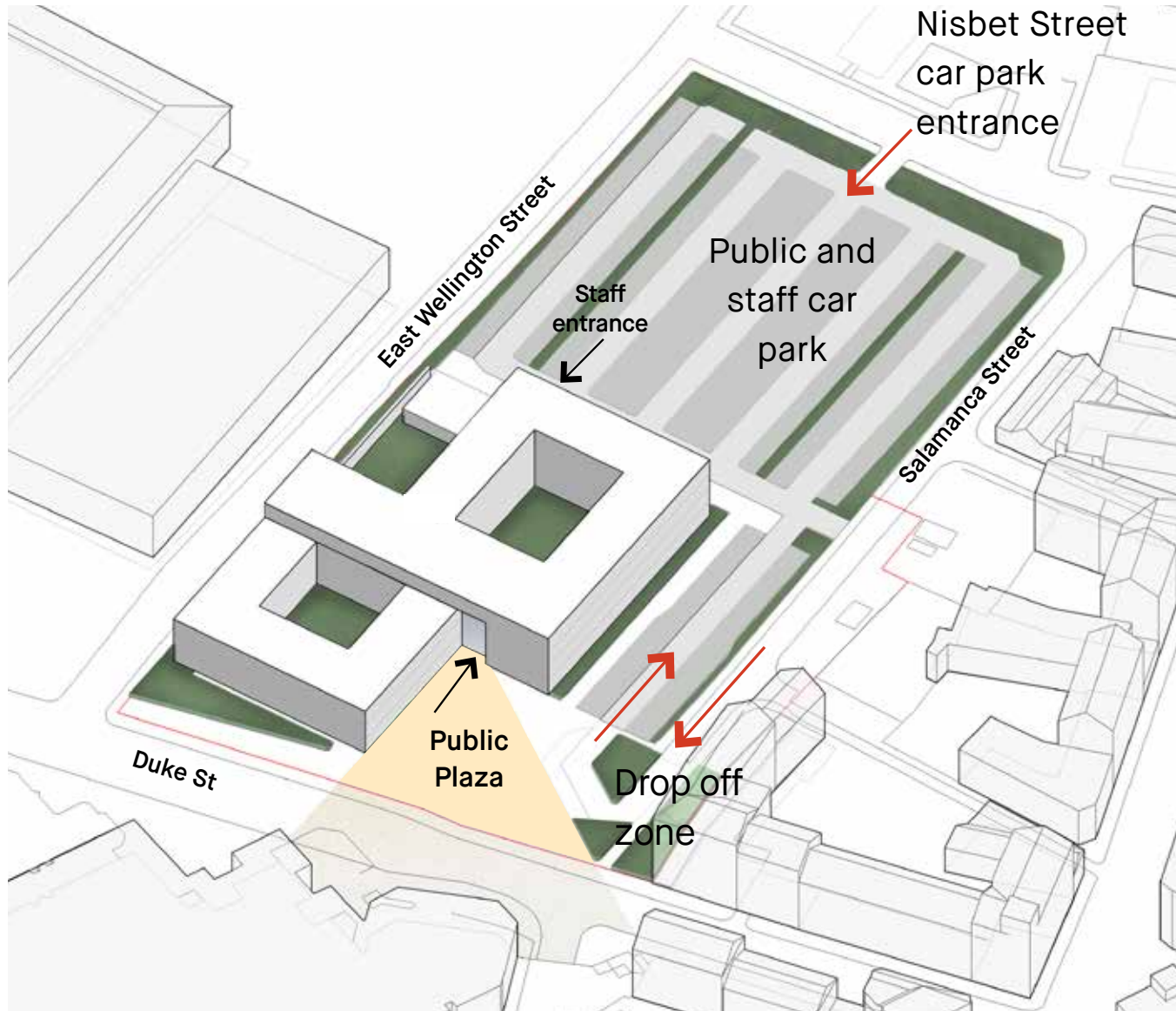
“ Good to see community and service users opinions having been taken on board”

As part of the Planning Application process a dedicated website was provided with introductory videos from HSCP and Hoskins Architects:

- Animation of the proposal in context
- Downloadable exhibition boards
- Downloadable and on-line feedback capability
- Two live events with chat facility
- Phone number to request physical copies of information to be posted
- Advertised in traditional methods (posters in NHS & HSCP facilities and advertisement in the local newspaper) as well as social media and emails to community representatives and councillors

Design Response

Overview of proposed site strategy



1. View of entrance plaza
2. View from Duke Street
3. View from East Wellington Street



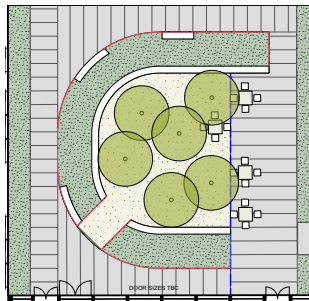
Public Realm

- Plaza off faced by front entrance and library
- Strong planted edge of trees to car park to screen parking
- Retaining bank of existing trees along Nisbet Street
- Central runs of trees to visually break up parking and zone areas
- Routes to stitch into urban fabric
- Reinstatement of Salamanca pedestrian route to Duke St.
- Raised planters to building perimeter to define site and provide privacy
- Planters in plaza to gather together planting, create informal seating and address scale open space

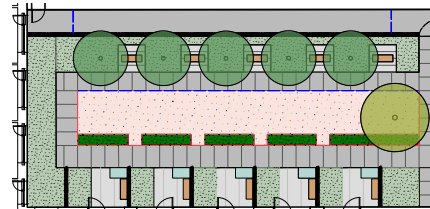
Courtyards

- West courtyard to be accessed from foyer, cafe, library and gym
- East courtyard to be accessed from foyer with separate zone for Children's Services Department
- North private courtyard for children's contact rooms

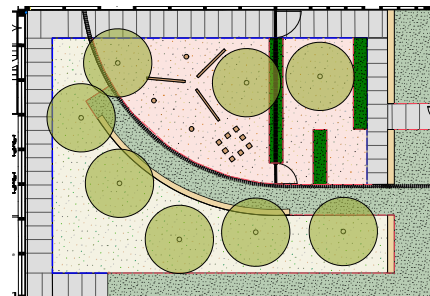
West



North

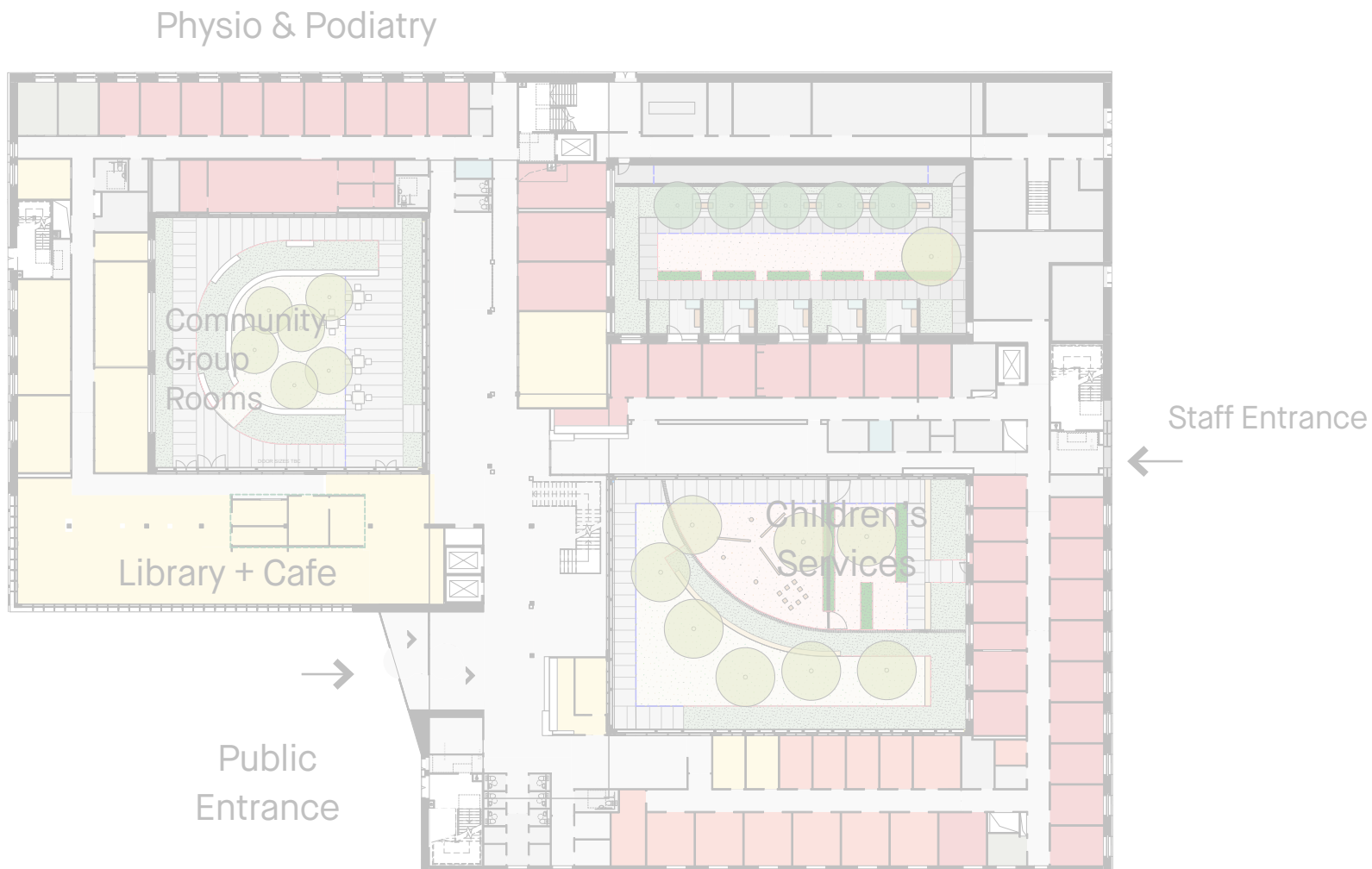


East



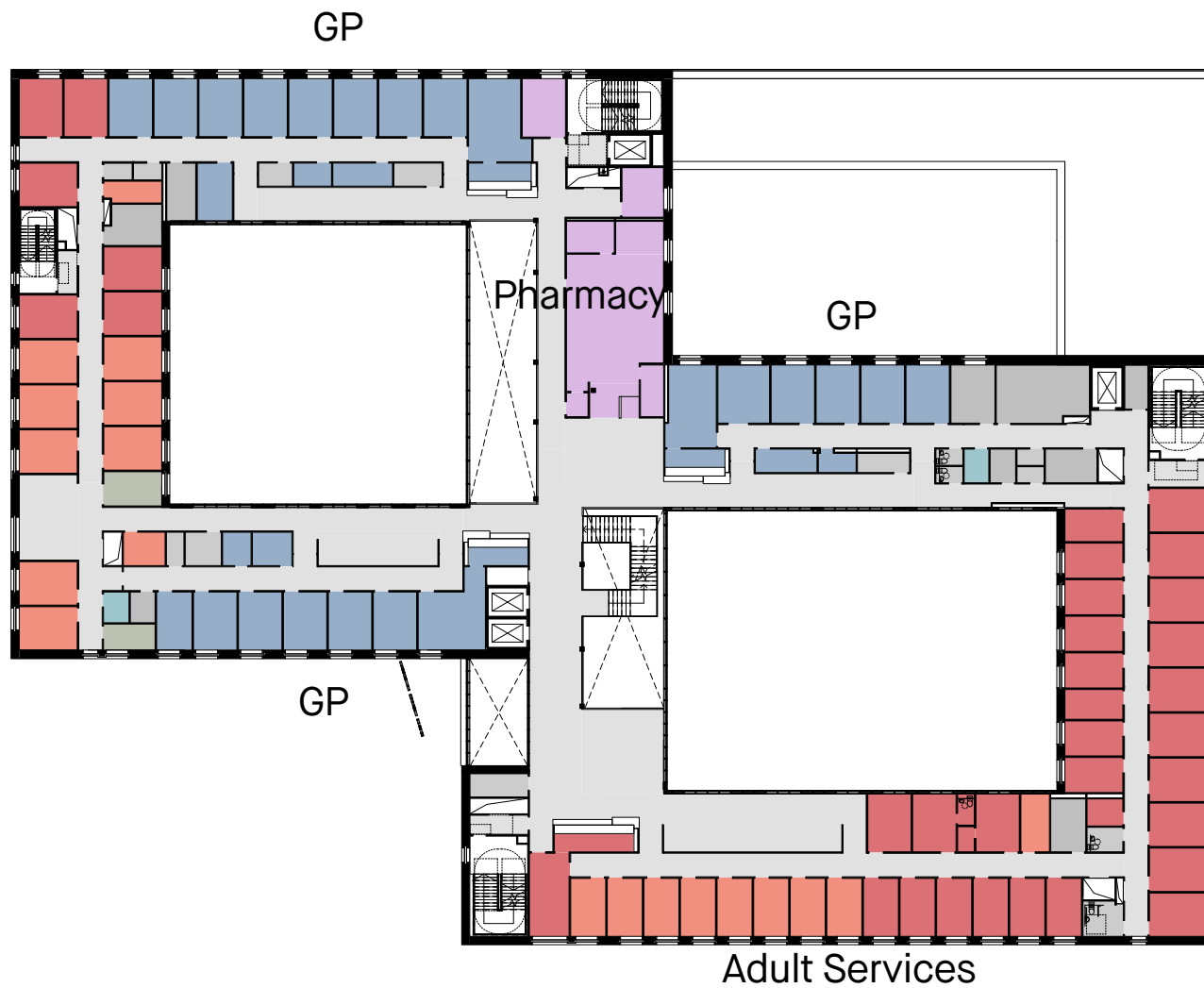
Building Organisation

Ground Floor Plan



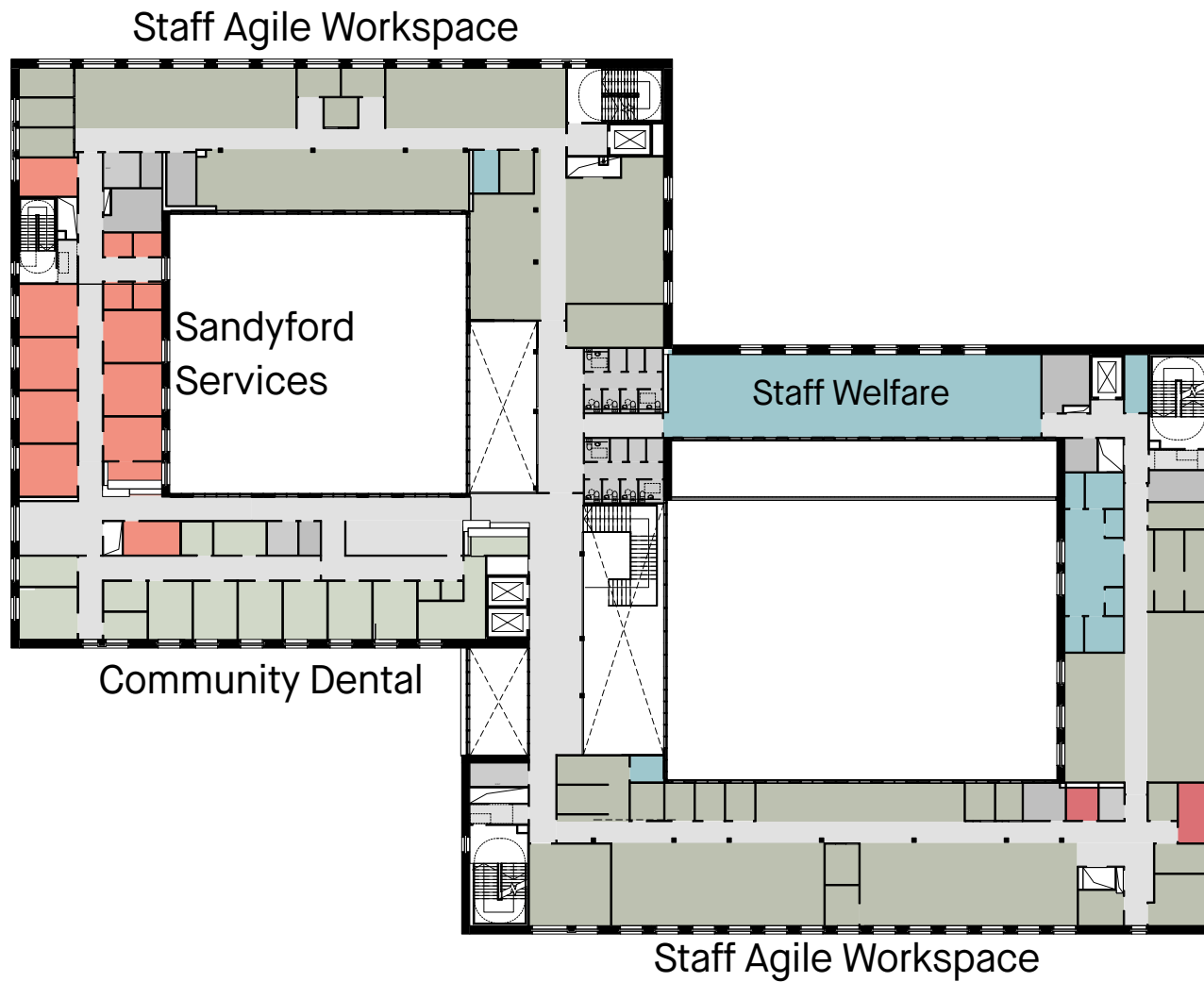
Building Organisation

First Floor Plan



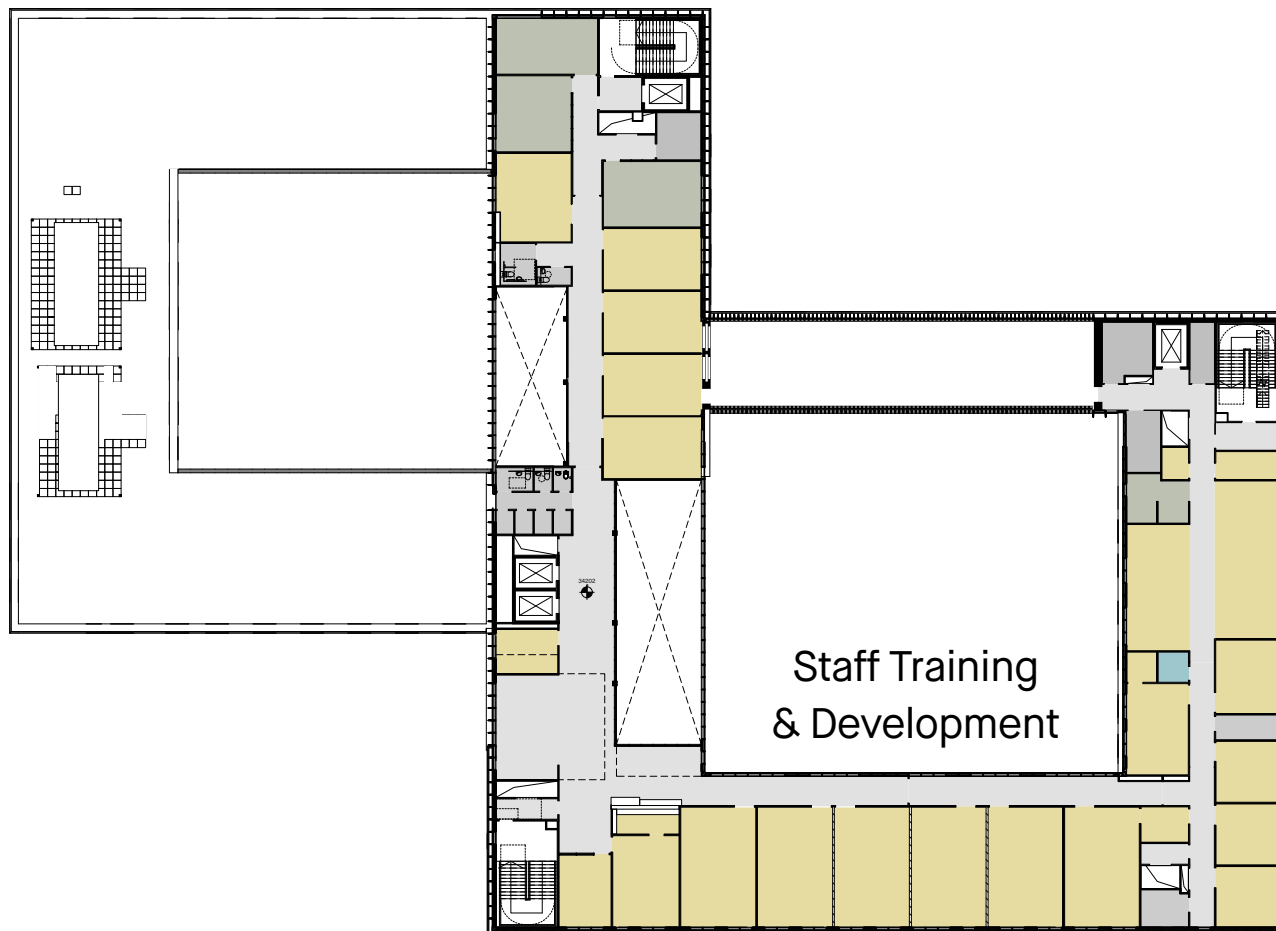
Building Organisation

Second Floor Plan



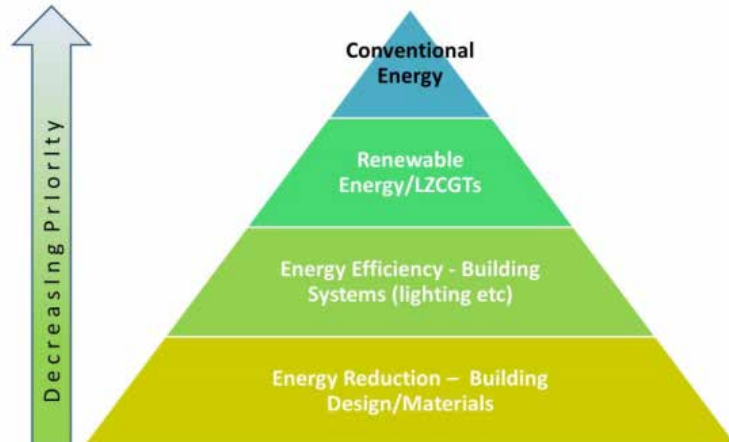
Building Organisation

Third Floor Plan



Sustainability

1. Roof-mounted pv panels
2. Generous glazing, shading and openable windows



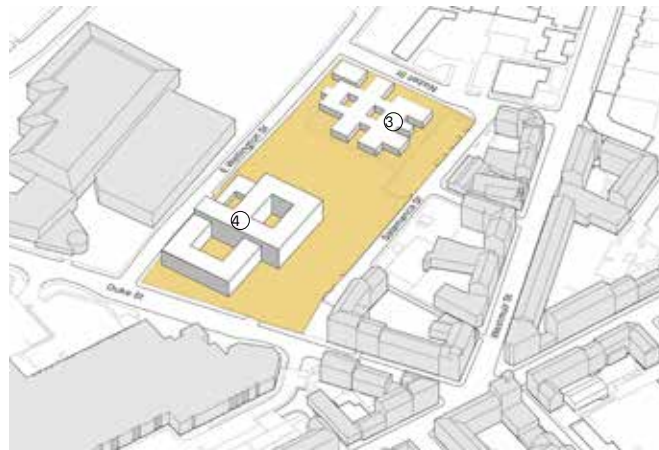
- The building is designed to be 'fossil fuel-free'
- Achieving Glasgow Gold Standard
- Very well insulated with high levels of airtightness and triple glazing
- Solar gain through the provision of openings and shading will be optimised
- Durable low impact materials will be specified. Low VOC materials will be specified internally to maintain a high standard of indoor air quality
- Energy efficient equipment will be specified to ensure efficient operational energy use
- Roof-mounted photovoltaic panels generating power to further reduce overall energy

Construction

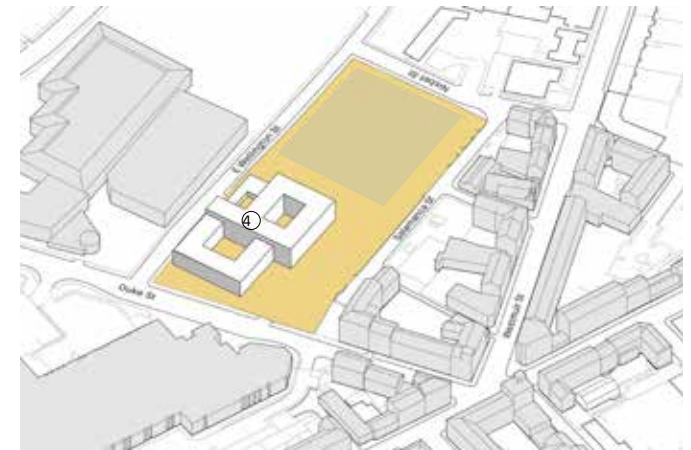
Project Programme



Phase 1 - currently ongoing
Demolition of Parkhead Hospital and Anvil Resource Centre.



Phase 2 - early 2022 till mid 2024
Construction of new Parkhead Hub and road alterations



Phase 3 - late 2024 for approx. 6 months
Demolition of Parkhead Health Centre and construction of new car park.

- 1. Parkhead Hospital
- 2. Anvil Resource Centre
- 3. Parkhead Health Centre
- 4. New Parkhead Hub



Community Benefits

Gary Smithson,
Hub West Scotland



Community Benefits

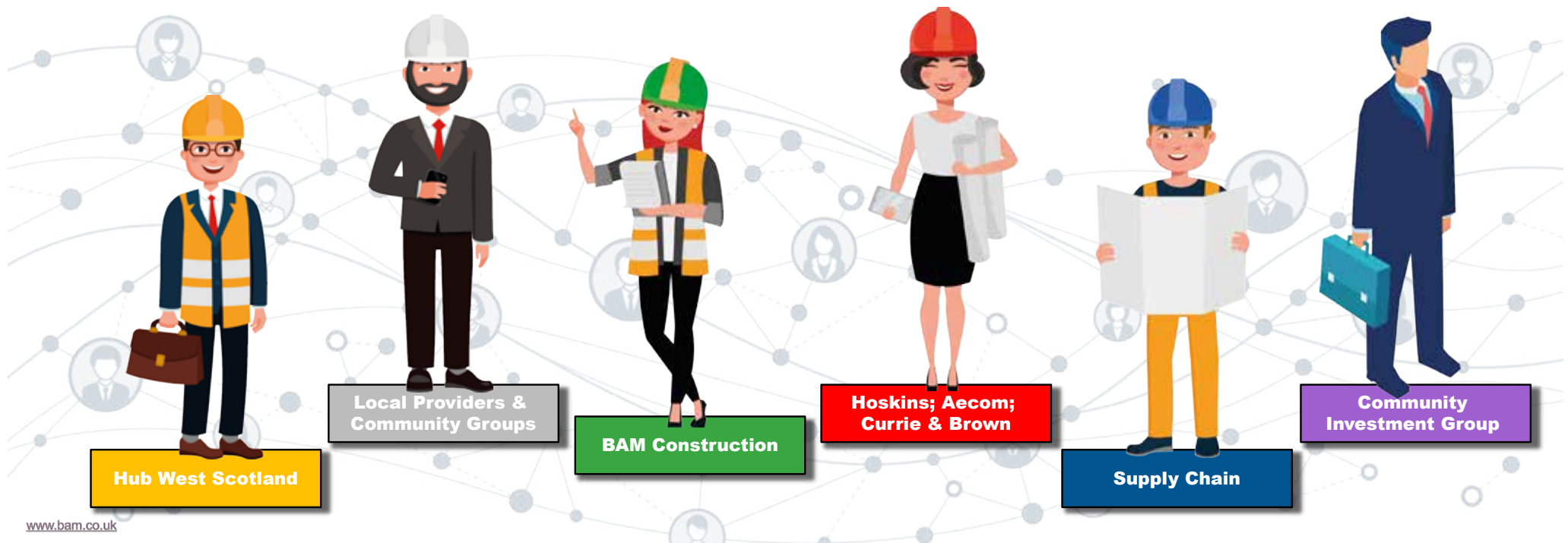
Areas of investment are planned to focus in the following areas:

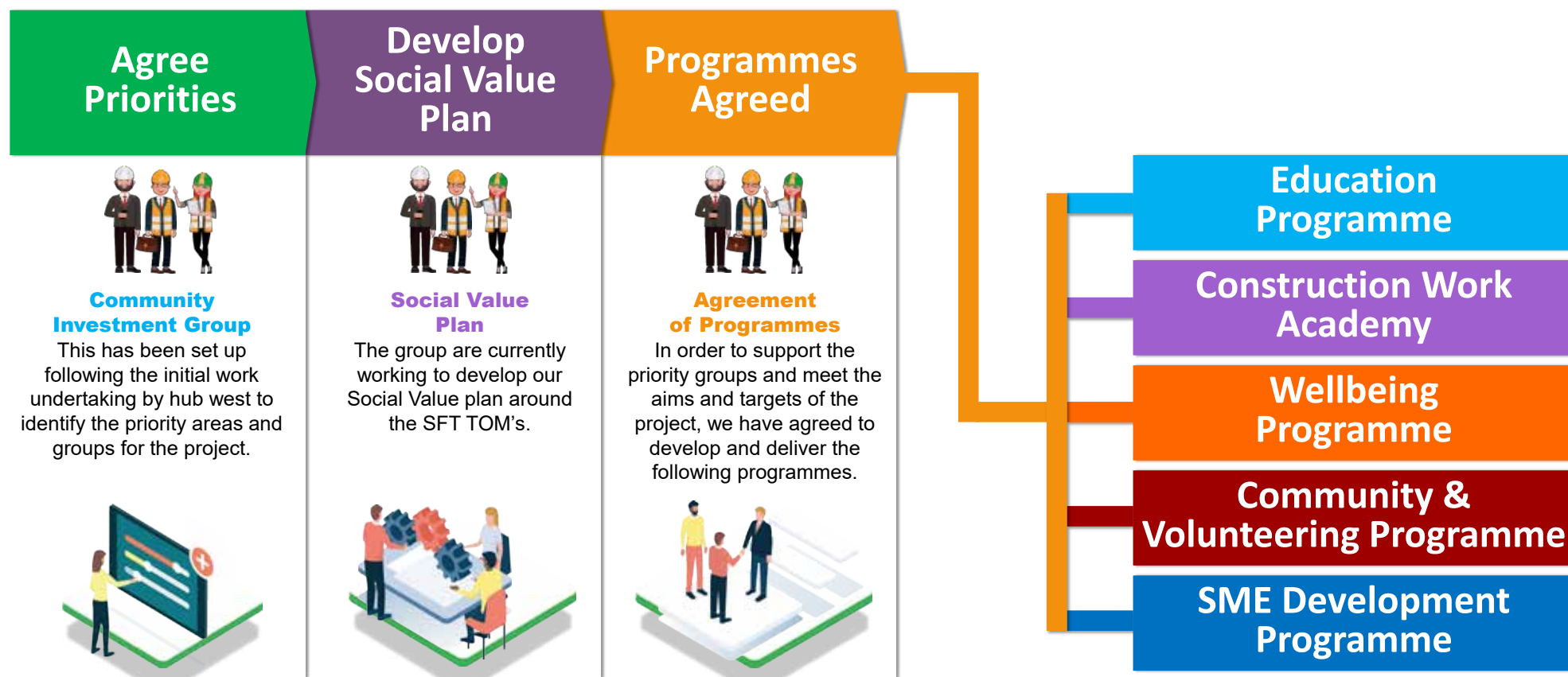
- Supporting local people in employment including apprentice opportunities
- Improving skills by engaging schools and colleges.
- Providing opportunities for local businesses including Small to Medium Enterprises.
- Supporting local community projects
- Promoting health and wellbeing for the workforce and community



SOCIAL VALUE ROAD MAP

Working collaboratively to successfully deliver social value on the project





Education Programme

01. Development phase - employer meetings

- hWS; BAM; Hoskins; Aecom; Currie & Brown

01

02. Development phase - education meetings

- Skills Development Scotland; Glasgow Kelvin College; Glasgow Education Services; Whitehill Secondary School & St Andrews Secondary School; hWS; BAM; Hoskins; Aecom; Currie & Brown

02

03. Programme Launch

- hWS; BAM; Hoskins; Aecom; Currie & Brown; Glasgow Kelvin College; students

03

05. Engineer sessions

- Aecom; Glasgow Kelvin college; students

05

04. Architects sessions

- Hoskins; Glasgow Kelvin college; students

04

07. Construction sessions

- BAM, Glasgow Kelvin college, students

07

06. QS sessions

- Currie & Brown, Glasgow Kelvin college, students

06

08. Project Build

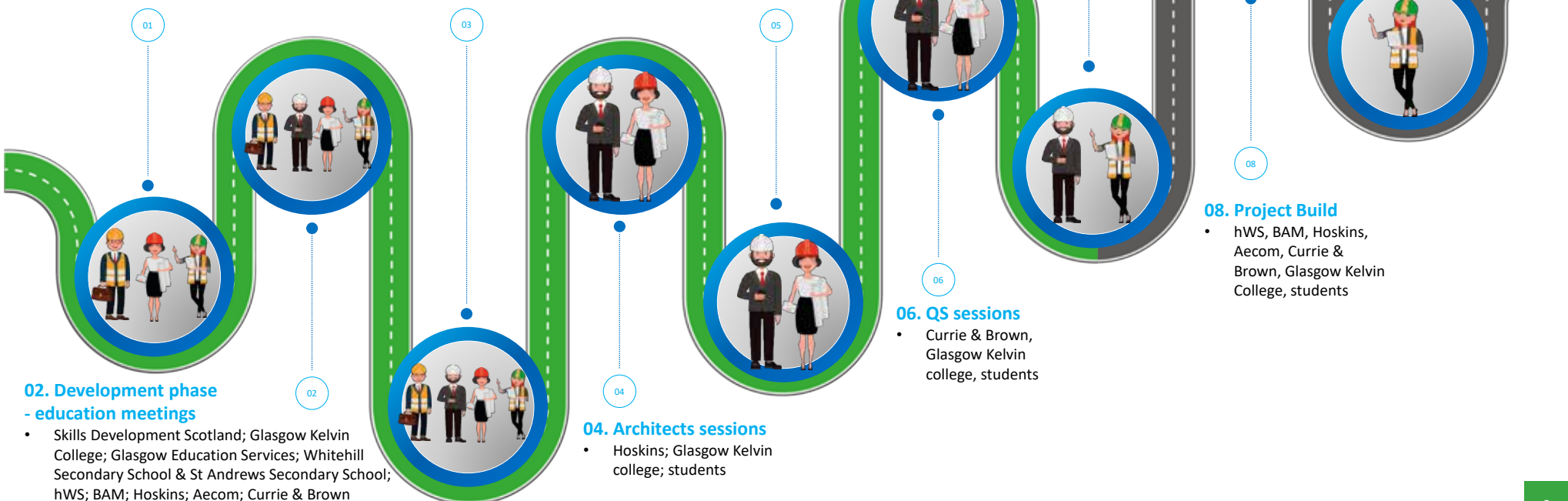
- hWS, BAM, Hoskins, Aecom, Currie & Brown, Glasgow Kelvin College, students

08

09. Development & progression opportunities

- BAM

09



Construction Work Academy

01. Programme proposal

- Community Investment Group; Community Justice; BAM; hWS

03. Programme Launch

- BAM, hWS & the Wise Group
- Link in with other local providers - Jobs & Business Glasgow; Recreate; Choice works; Clyde Gateway

02. Programme development

- BAM, hWS & the Wise Group
- Link in with other local providers - Jobs & Business Glasgow; Recreate; Choice works; Clyde Gateway

05. Job Trials and work experience

- BAM; Supply Chain; *Priority Group (Candidates)

04. Training

- Wise Group; BAM; hWS; Priority Group - candidates

06. Employment Opportunities

- BAM; Supply Chain; *Priority Group (Candidates)

Wellbeing Programme

01. Programme proposals & discussion

- Community Investment Group; BAM; hWS

03. Link in with ongoing NHS programmes and training

- Community Investment Group; BAM; hWS

05. Programme outcomes

- BAM, supply chain

04. Programme Launch

- BAM, supply chain

02. Development of Wellbeing Programme

- Community Investment Group; BAM; hWS

Community & Volunteering Programme

01. Project proposals & discussion

- Community Investment Group; BAM; hWS

03. Helping hands brief and application process

- Community Investment Group; BAM; hWS

02. Helping Hands Project Sub group created

- Community Investment Group; BAM; hWS

05. Helping Hands tender process

- Community Investment Group; BAM; hWS; Client

04. Helping Hands Competition Launched

- Community Investment Group; BAM; hWS; Client

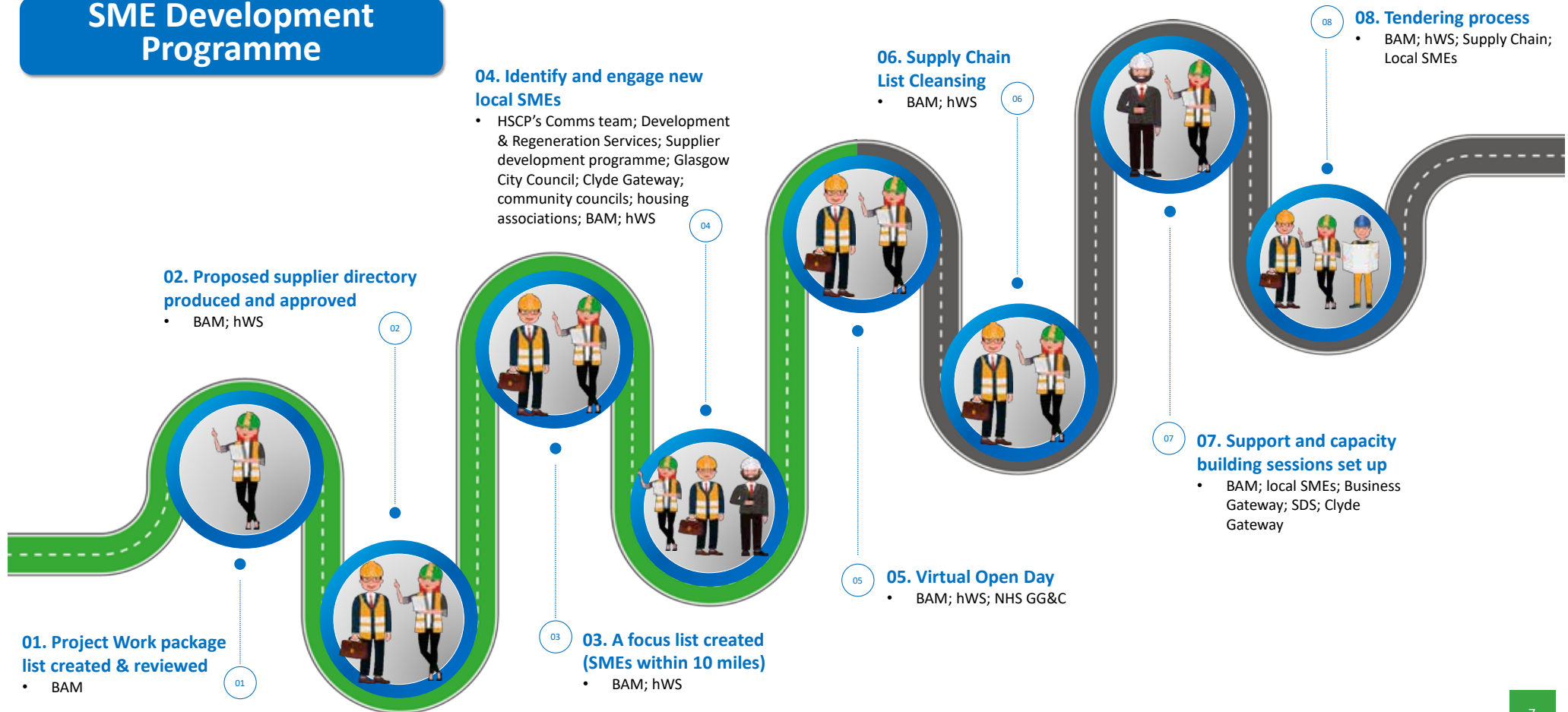
06. Helping Hands Project launches

- hWS; BAM; Supply Chain; Local Community Groups

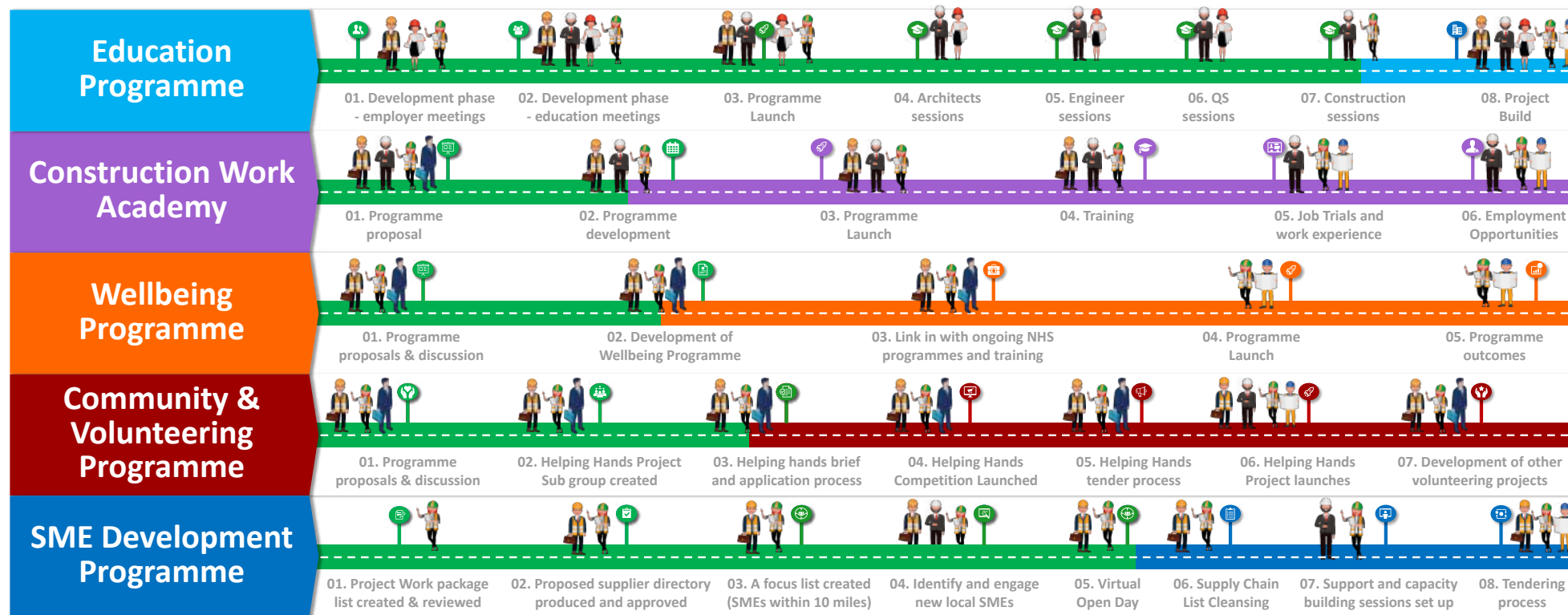
07. Development of other volunteering projects

- Community Investment Group; BAM; hWS

SME Development Programme



Final Road Map



KEY



Hub West Scotland



Community Groups



BAM Construction



Hoskins; Aecom; Currie & Brown



Supply Chain



Community Investment Group

Reporting



The project will be reported on the **Social Value Portal** on SFT's TOMs (Themes, Outcomes and Measurements). The portal focuses on the following key themes which our programmes and activities directly feed into:

- Fair work
- Entrepreneurial, inclusive and sustainable economy
- Inclusive, empowered, resilient communities
- Protecting & enhancing the environment
- Social innovation



We can use this data to monitor progress and update and adapt the plan across the lifetime of the project to ensure that our goals are achieved

Question & Answer Session



**Thank you for your
participation!**





**North East Health & Social Care Hub
Your Chance to View the Latest Plans
Thursday 27th May 10am – 11.30am 2021**

Hub Agenda Meeting 27th May 2021

- Introduction Dominique Harvey Head of Planning Children's Services & North East HSCP & Gary Smithson Senior Development Manager Hub West
- Presentation Hoskins Architects on the design and layout of the building and services
- Second Presentation
- Community Benefits Gary Smithson & Senior Development Manager Hub West
- Close Gary Smithson (Hub West) Dominique Harvey (HSCP)

